



The Proposed Pebble Mine

Relationship to Observed Fish Populations

Legend

- Mine Pit
- Mill Site
- Tailings
- Water Extraction Area

Fish Observations:

- Chinook Salmon
- Chum Salmon
- Coho Salmon
- Sockeye Salmon
- Rainbow Trout

This map portrays the relationship between the proposed Pebble Mine and documented fish populations. Current fish data depicts the distribution, abundance, and variety of species, and it is supplied by the Alaska Department of Fish and Game.

Data Source:

Fish: Fisheries report in reference to Permit No. SF-2004-114 and Amendment No. SF-2004-114-A-1, from HDR Alaska, Inc., to Alaska Department of Fish and Game, Division of Sport Fish, dated November 23, 2004.

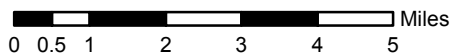
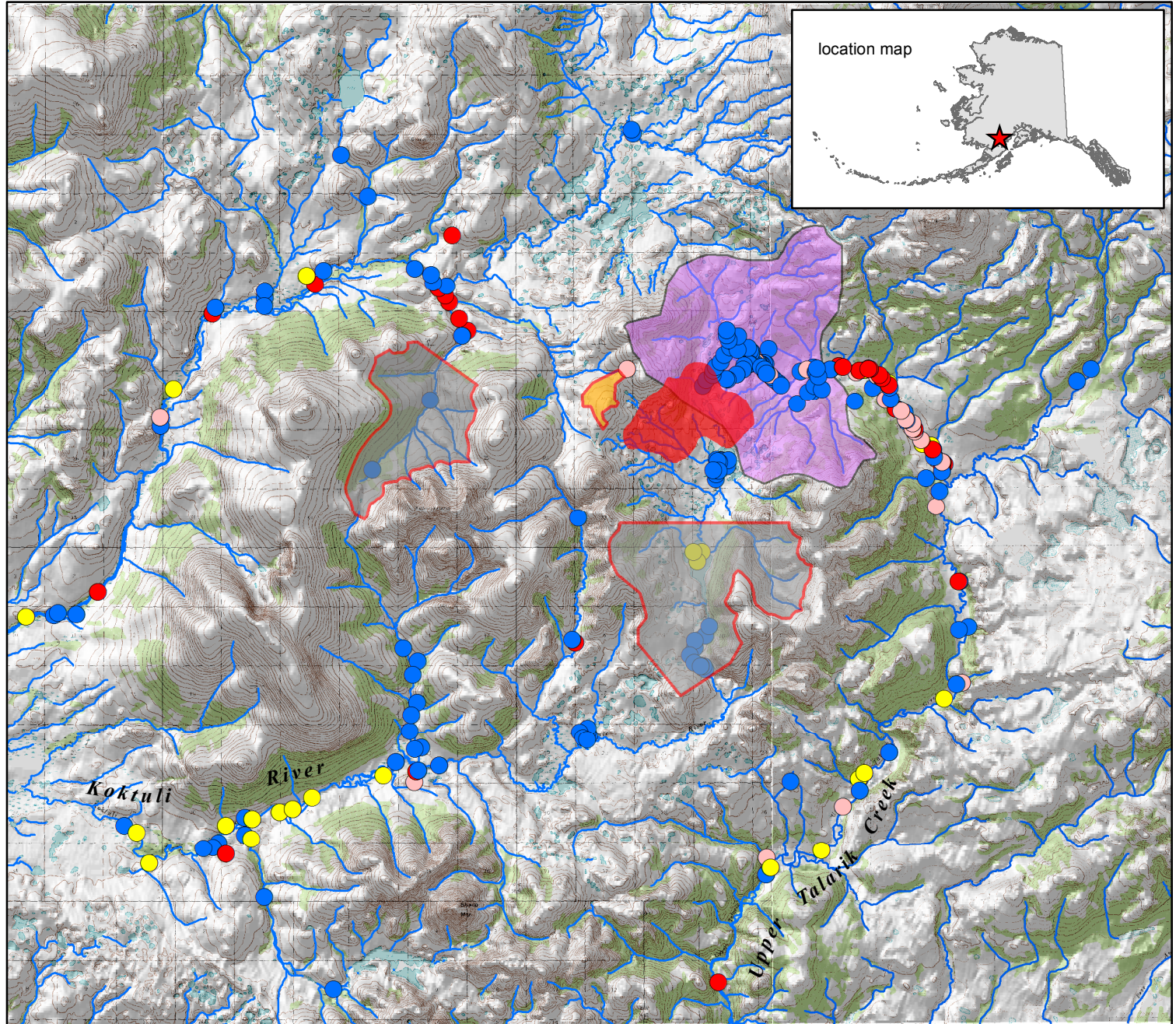
Report of collecting activities for the Pebble Project in reference to Permit No. SF-2005-049, from HDR Alaska, Inc., to Alaska Department of Fish and Game, Division of Sport Fish, dated October 25, 2005.

Report of collecting activities for the Pebble Project in reference to Permit No. SF-2006-057, from HDR Alaska, Inc., to Alaska Department of Fish and Game, Division of Sport Fish, dated February 2, 2007.

Additional maps supplied by the Alaska Department of Fish and Game.

Pebble Mine Project: The following files were downloaded from: <http://www.dnr.state.ak.us/mlw/mining/largemine/pebble/> as of February 5, 2007:

Pebble Project Initial Application for Certificate of Approval to Construct a Dam
 Tailings Impoundment A – Figures
 Tailings Impoundment G – Figures



February 28, 2007
 fish_distribution_salmon.mxd
 Coordinate System: UTM, Zone 5, NAD27, CM: -155.5