

Pebble Project Socioeconomic Baseline

**Prepared for:
Baseline Environmental Team Agency
Meetings**

**Prepared by:
McDowell Group, Inc.**

November 30, 2007

Scope of Work

- **Demographics Baseline**
- **Community Infrastructure Baseline**
- **Cash Economy Baseline**
- **Health and Social Baseline**

Communities Included

- **Iliamna Lake/Lake Clark Communities**
 - Kokhanok, Iliamna, Newhalen, Nondalton, Pedro Bay, Port Alsworth, Levelock, and Igiugig
- **Nushagak/Bristol Bay Borough**
 - Balance of Lake and Peninsula Borough, Bristol Bay Borough, and Dillingham Census Area
- **Cook Inlet/Mat-Su Borough**
 - Kenai Peninsula Borough, Municipality of Anchorage, and Matanuska-Susitna Borough

Demographics

Content/Scope

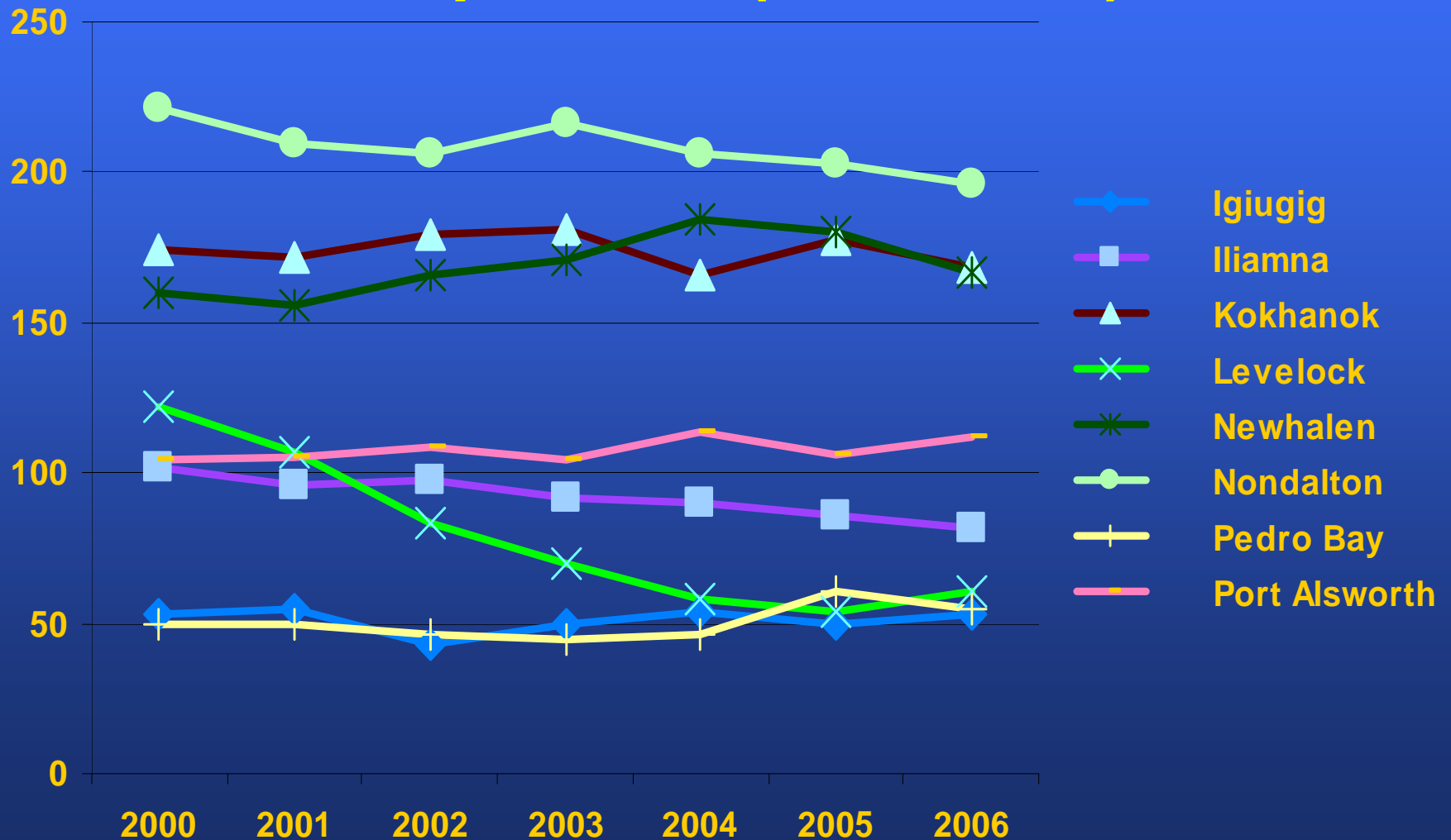
- **Population Trends (1990-2006)**
- **Population Characteristics (1990 and 2000)**
 - **Age characteristics**
 - **Gender**
 - **Race**
 - **Migration**
- **Household and Family characteristics (1990 and 2000)**
- **Language**

Demographics

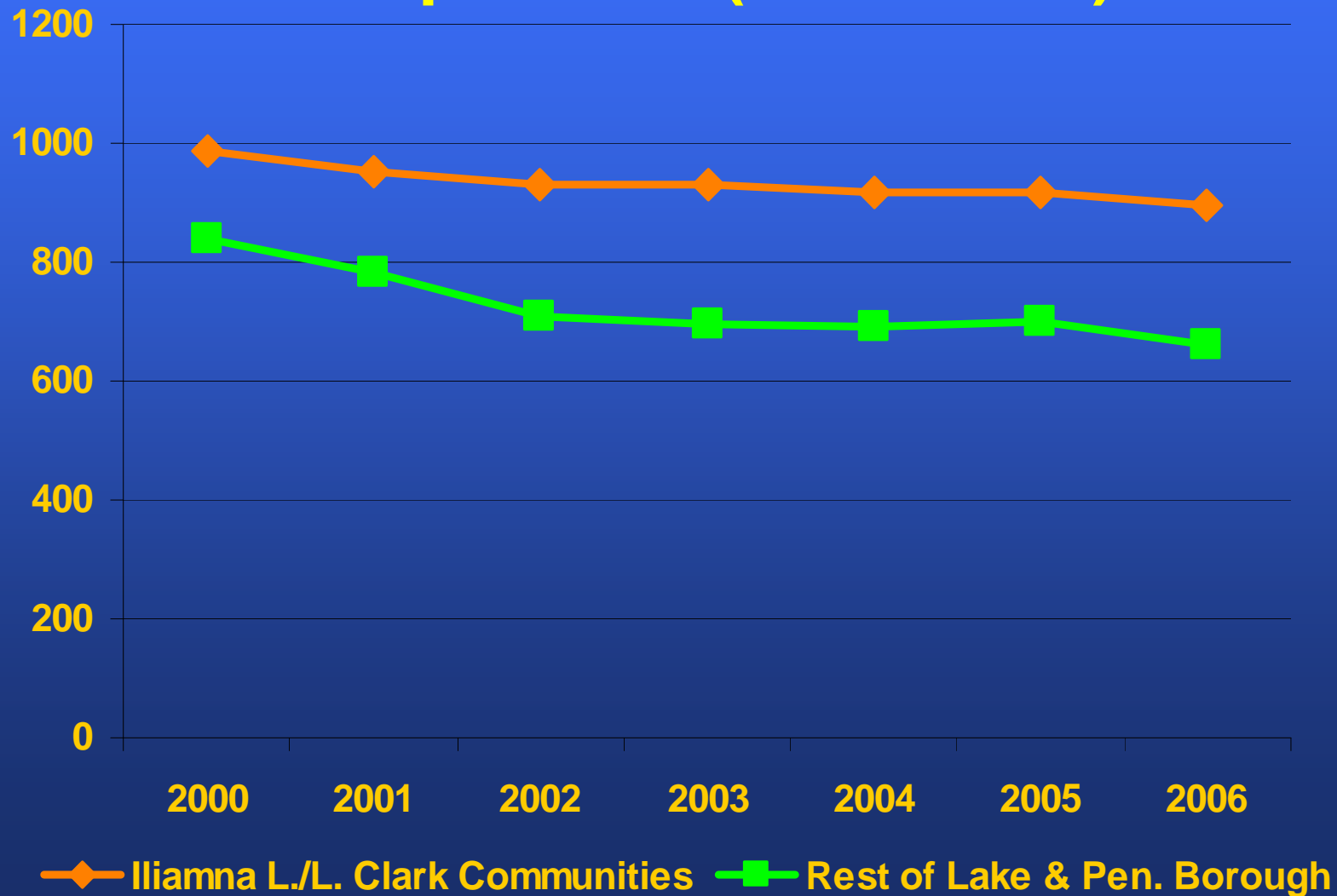
Data Sources/Limitations

- **U.S. Census Bureau**
 - Comprehensive local-level data
 - Dated data
 - Misses key seasonal trends
- **ADF&G Subsistence Survey**
- **Alaska Department of Labor and Workforce Development**
 - More current, but limited local-level data
 - Estimates only

Iliamna L./L. Clark Communities Population (2000-2006)



Lake & Peninsula Borough Population (2000-2006)



Economy

Content/Scope

- **Cash & Non-cash Economic Profile**
- **Employment/Unemployment (1990, 2000, 2006)**
 - **Annual average, peak, key local employers**
- **Commercial fishing activity/permit holders/crew (1990-2006)**
- **Capital improvement projects (2002-2007)**
- **Workforce attributes (1990, 2000)**
- **Per capita and household income (1990, 2000)**
- **Public assistance receipts (2001-2006)**

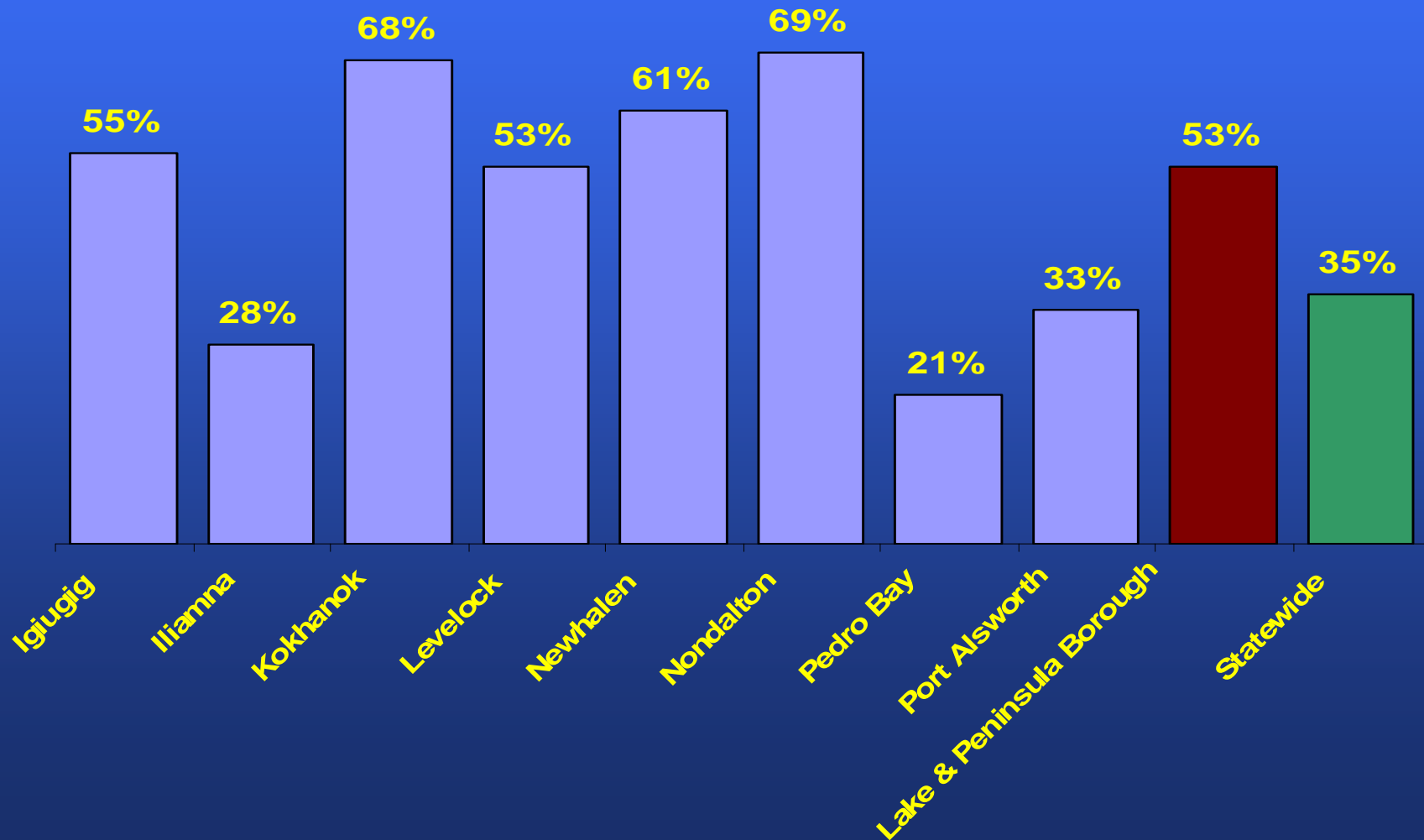
Iliamna L./L. Clark Communities Median Household Income (2000)



Iliamna L./L. Clark Communities Per Capita Income (2000)



Iliamna Lake/L. Clark Communities Pop. > 16 Years Not In Labor Force (2000)



Cash Economy

Content/Scope

- **Basic Industry Overview**
 - Commercial fishing/seafood processing
 - Visitor industry
 - Government
 - Other mining activity
- **Regional economic outlook**

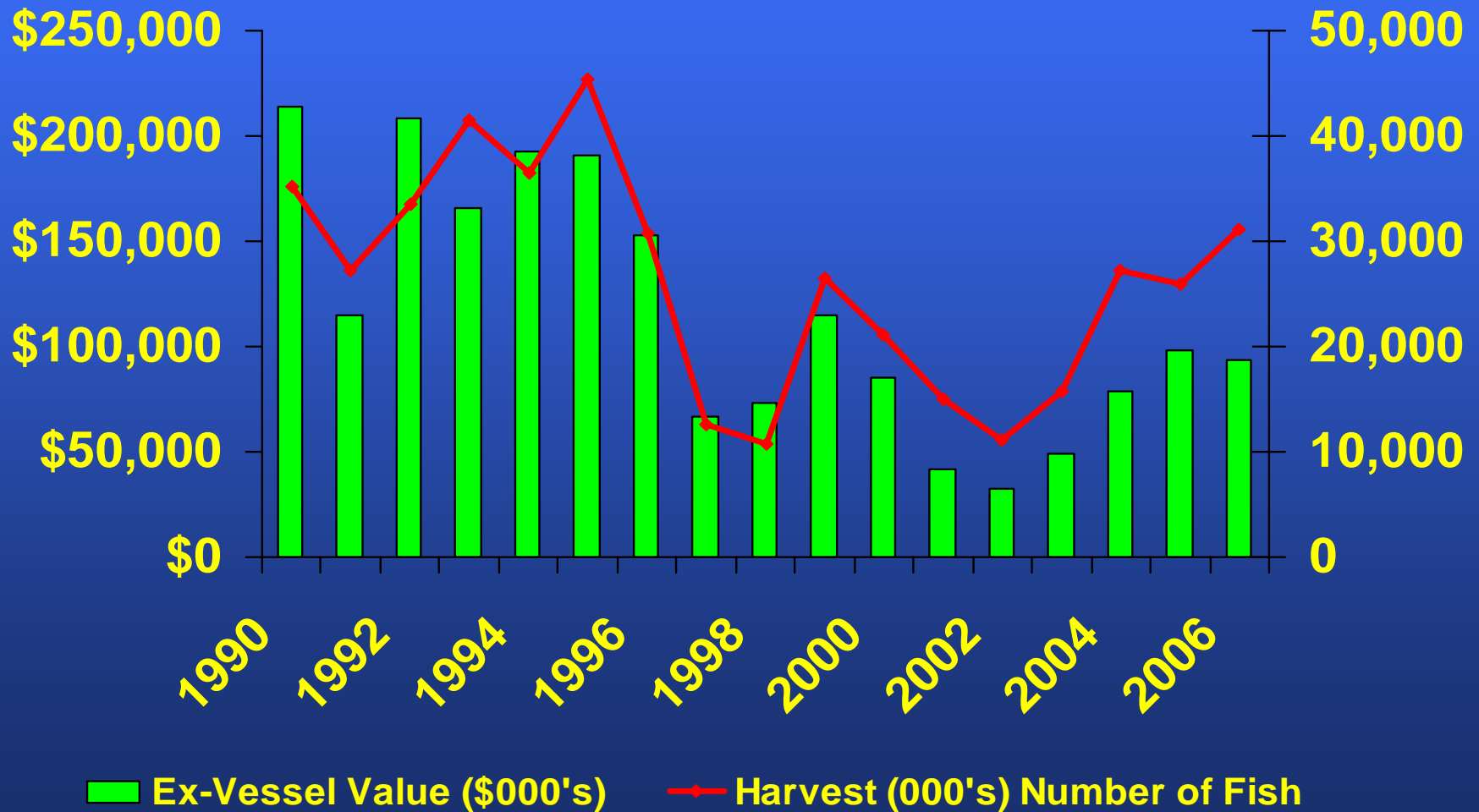
Cash Economy

Data Sources

- **Local sources**
 - Planning documents
 - Interviews
- **State sources**
 - DOLWD, DCED, ADF&G, H&SS, DNR
- **Federal Sources**
 - Census, BEA, NPS
- **Other**
 - Internal documents

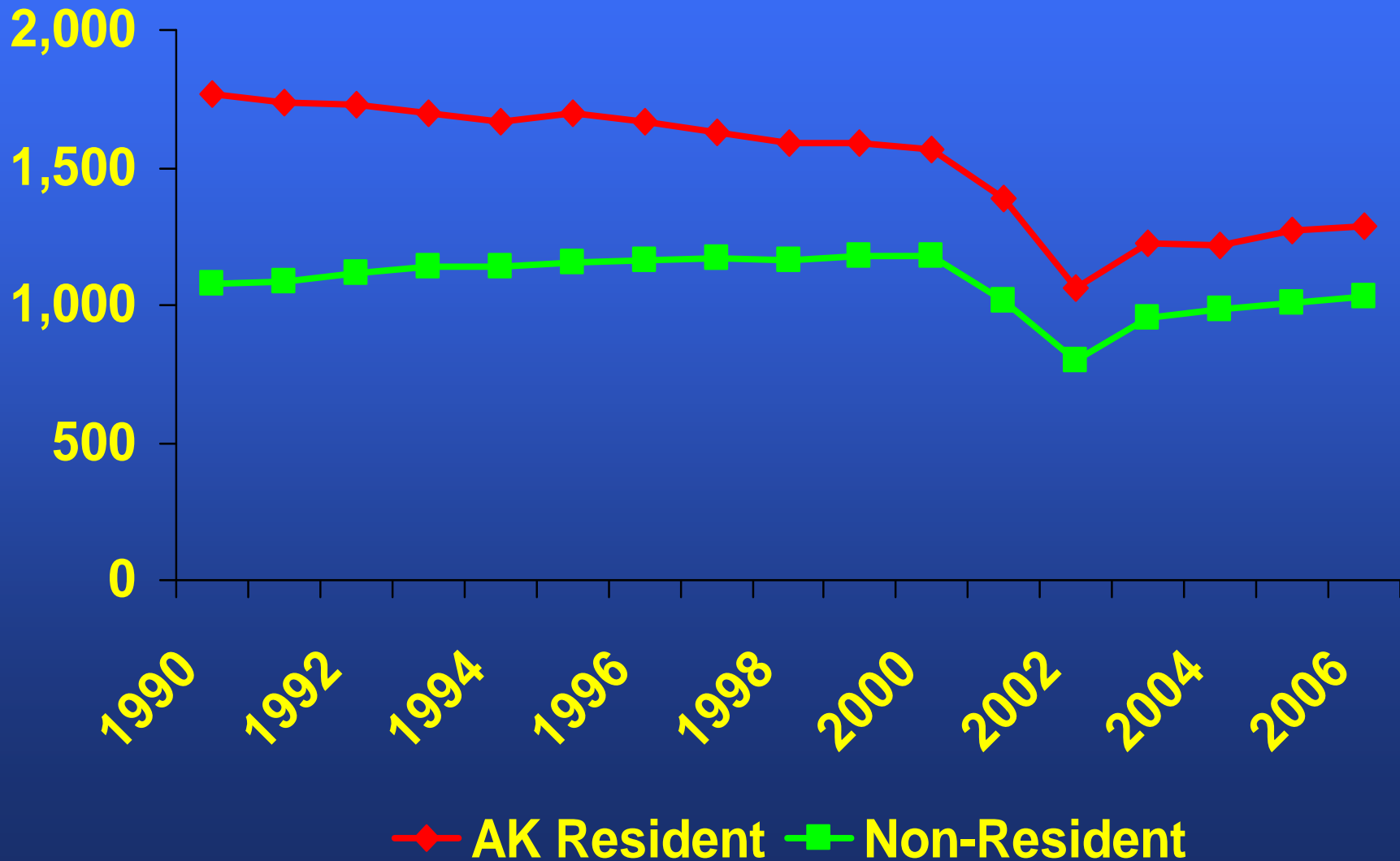
Bristol Bay Fisheries

Ex-vessel Value & Harvest Trends (1990-2006)



Bristol Bay Fisheries

Res./Non-Res. Permits Fished (1990-2006)



Cash Economy Research Challenges

- **Employment & income**
 - DOLWD data does not include self-employed or military
 - Data may be reported by company HQ, not job location
 - Unemployment data is based on applications for benefits
 - No resident/non-resident data
 - Confidentiality

Community Infrastructure Content/Scope

- **Housing**
 - Number of housing units, heating source, value, other characteristics
- **Utilities**
 - Water and wastewater
 - Solid waste
 - Communications

Community Infrastructure

Content/Scope

- **Education**
 - Facilities, Enrollment, Staff
- **Health Care**
 - Clinic services
 - EMS
- **Public Safety**
 - Law enforcement, Fire/Rescue

Community Infrastructure

Data Sources/Limitations

- **Local sources**
 - Interviews
- **State sources**
 - DCED, DEED, DPS
- **Federal sources**
 - Census
- **Other**
 - Regional housing authorities,
 - Regional health care providers
 - Communications carriers

Health and Social Content/Scope

- **Health**
 - Birth rates, and death rates and leading causes of death
 - Hospitalizations by diagnoses
 - Leading causes of non-fatal injuries

Health and Social Content/Scope

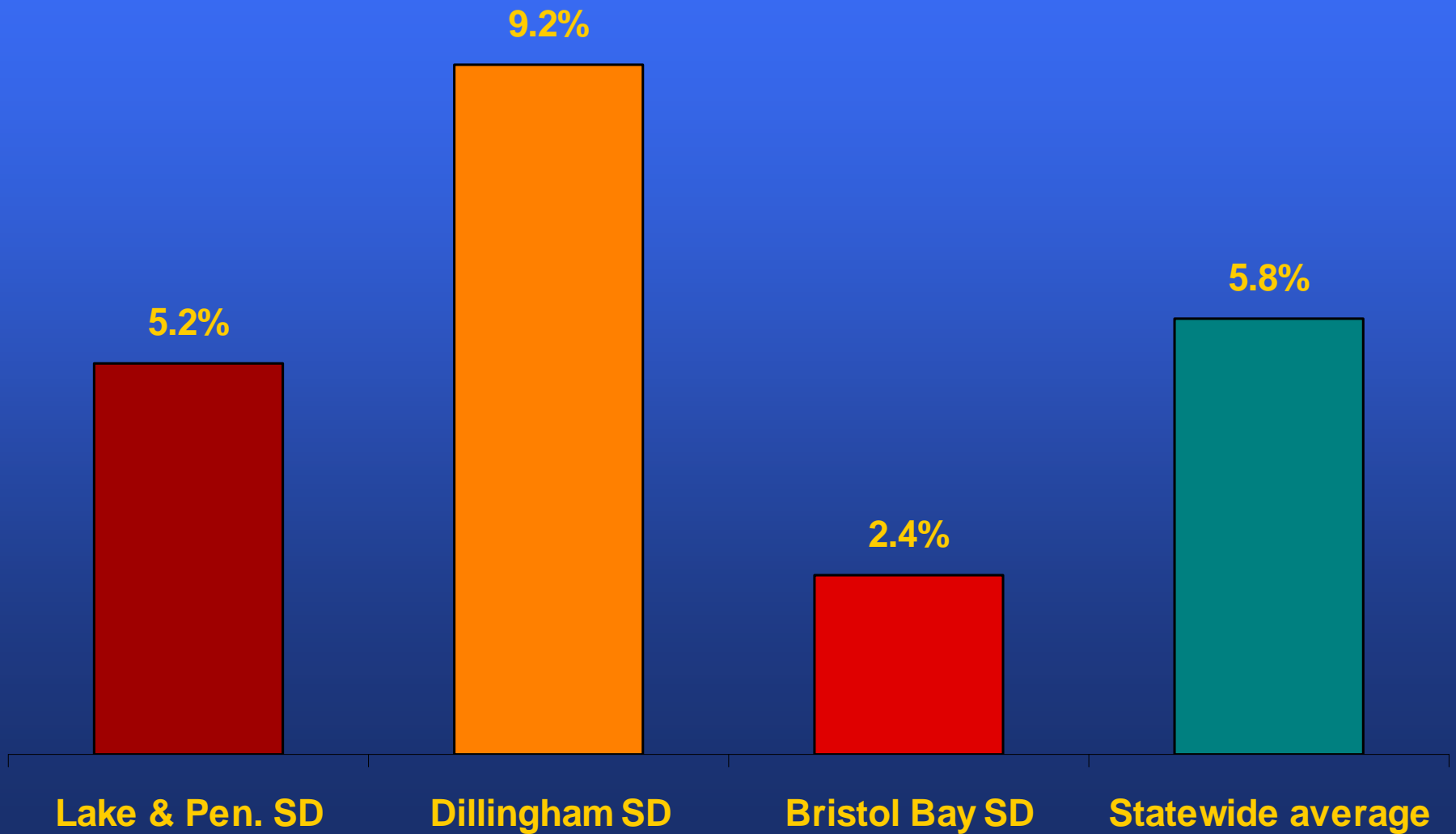
- **Crime**
 - Reported crime incidences
- **Education**
 - School inventory and enrollment
 - Graduation and dropout rates
 - Assessments -- Annual Yearly Progress, Standards Based Assessments, High School Graduation Qualifying Examinations

Health and Social Data Sources

- **State sources**
 - Department of Health and Social Services, Bureau of Vital Statistics
 - Department of Public Safety
 - Department of Education and Early Development
- **Federal sources**
 - U.S. Census
 - FBI

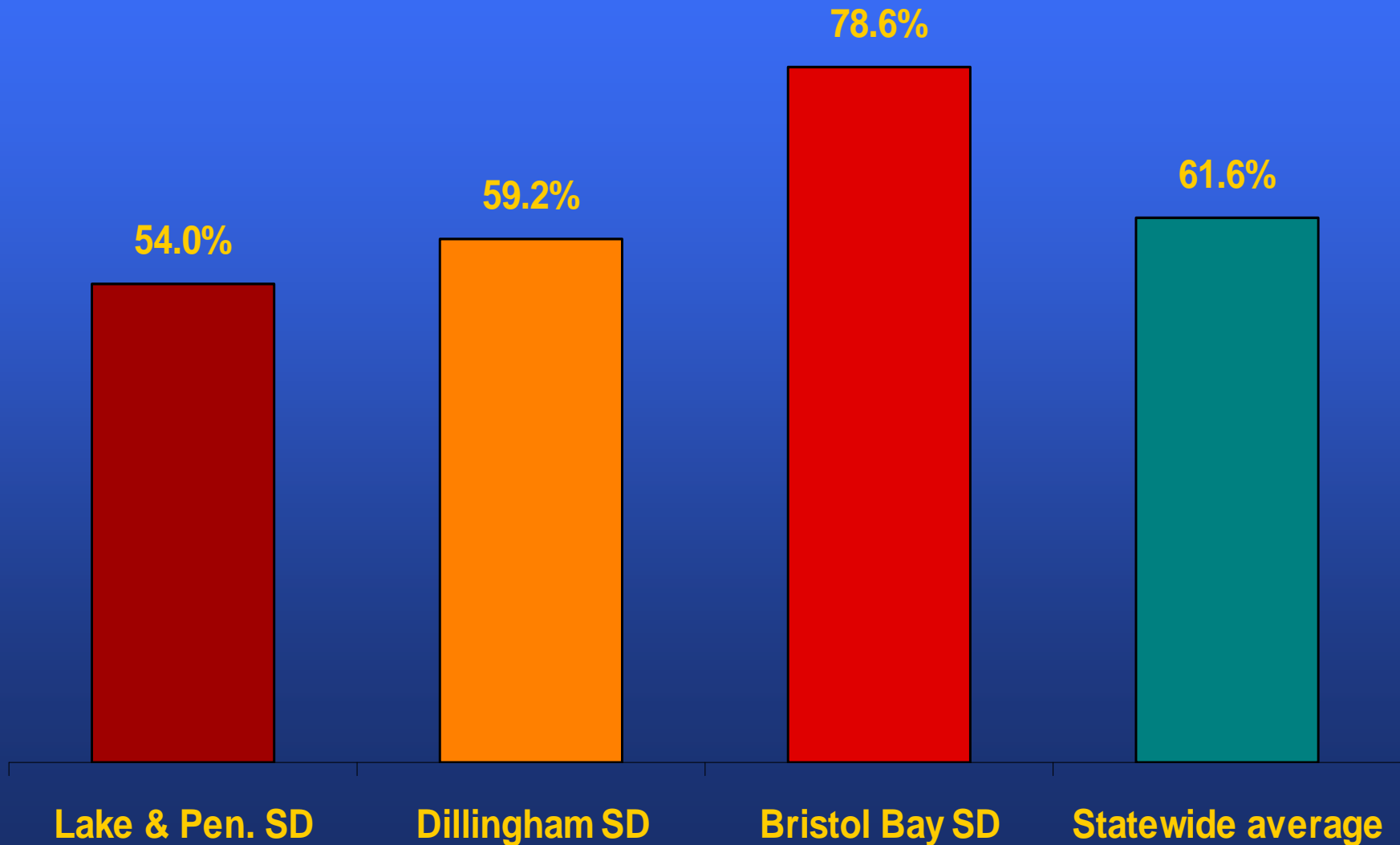
Education

Drop-out Rates (Grade 7-12) (SY06/07)



Education

Graduation Rates (Grade 9-12 Cohort)



Health and Social Research Challenges

- **Indicator Selection Criteria:**
 - Collected by reliable sources (such as government agencies or experienced private sector researchers)
 - Regularly and systematically updated
 - Related specifically to geographic area studied
- **However, little comparative, community-level data and some census-level data are available.**

Pebble Project Socioeconomic Baseline

**Prepared for:
Baseline Environmental Team Agency
Meetings**

**Prepared by:
McDowell Group, Inc.**

November 30, 2007