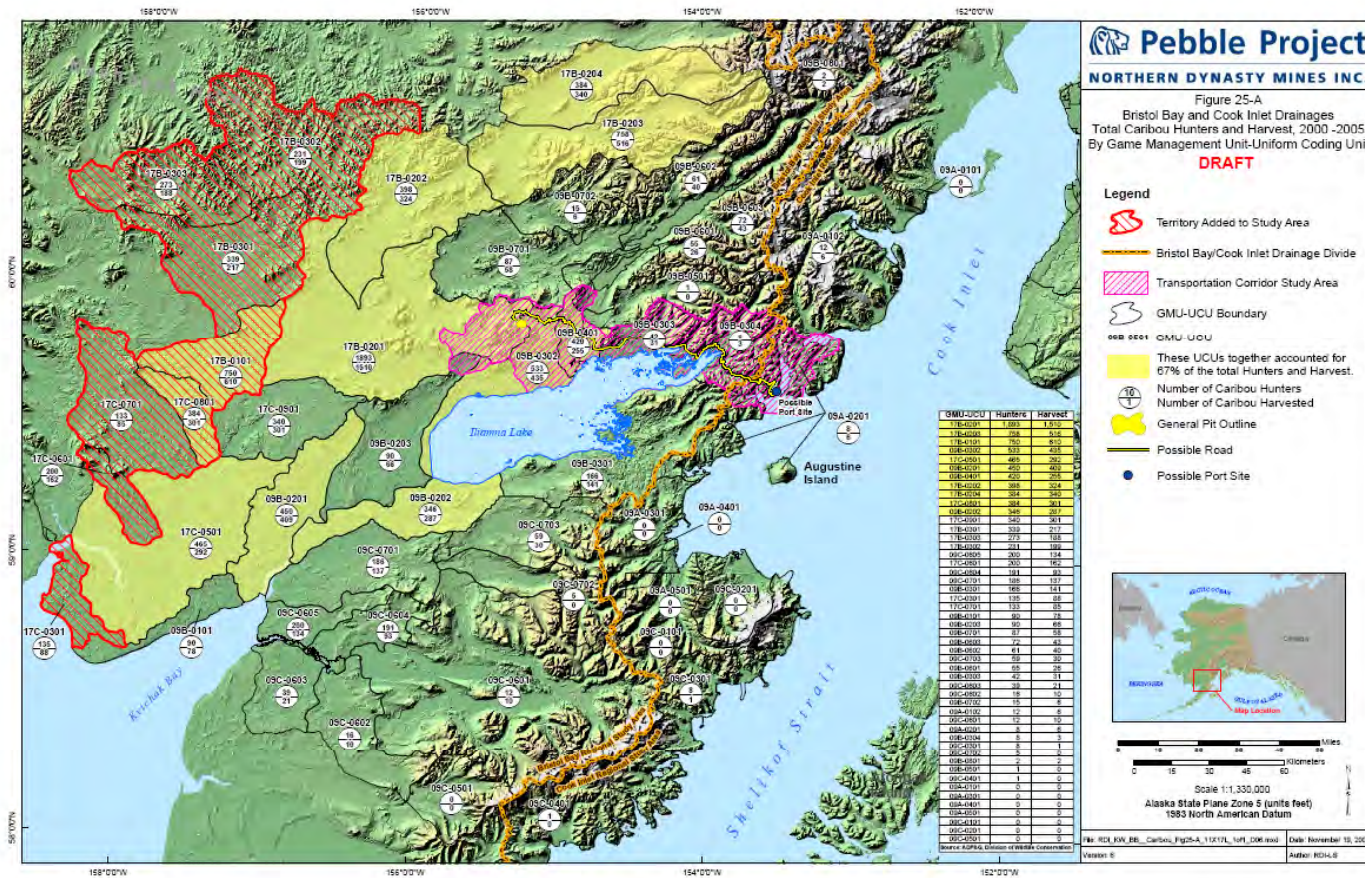


# Recreation Baseline Study



Kevin Waring Associates  
November 30, 2007

# Recreation Baseline Study

## Study Objectives

- Describe and map recreational uses and activities
- Estimate economic importance of commercial recreation

## Regional Study Area

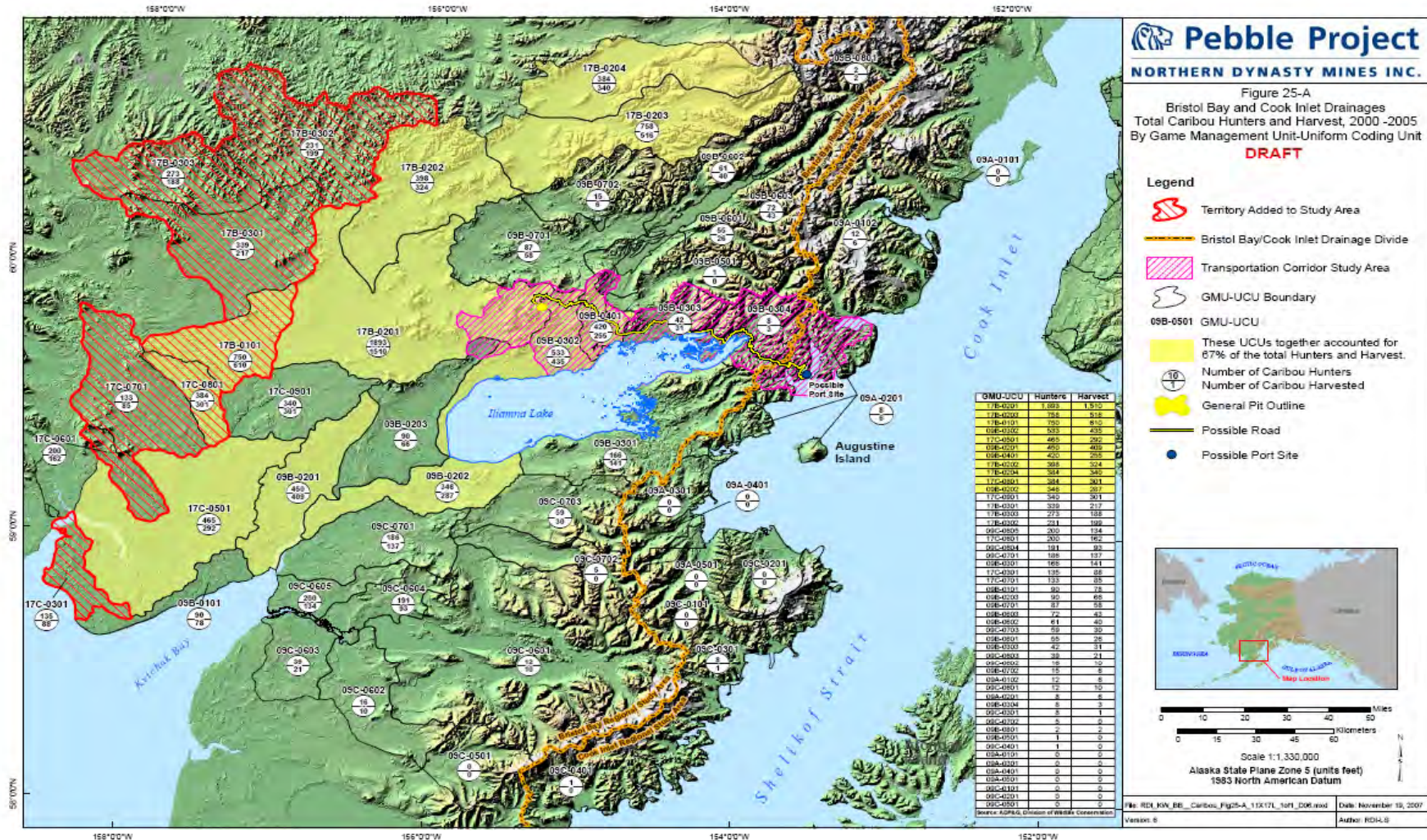
- Broadly defined to encompass lands and waters used for commercial and non-commercial recreation
  - onsite or near proposed project facilities
  - offsite in larger region potentially affected by the Pebble Project

# Additions to Study Scope in 2007

1. Regional Study Area expanded to include more territory in Mulchatna/Nushagak drainage
  - Big game hunting – 8 more GMU-UCUs in Nushagak-Mulchatna drainage added to original 41 GMU-UCUs
  - Sportfishing – 7 more sites in Nushagak River drainage added to original 48 sport fishing locations
2. Additional year of sportfishing, big game hunting, and National Park Service visitor data
3. More analysis of sportfishing and big game hunting in study area in historical and statewide perspective
4. More detailed spatial analysis of trends in big game hunting in Pebble Project vicinity



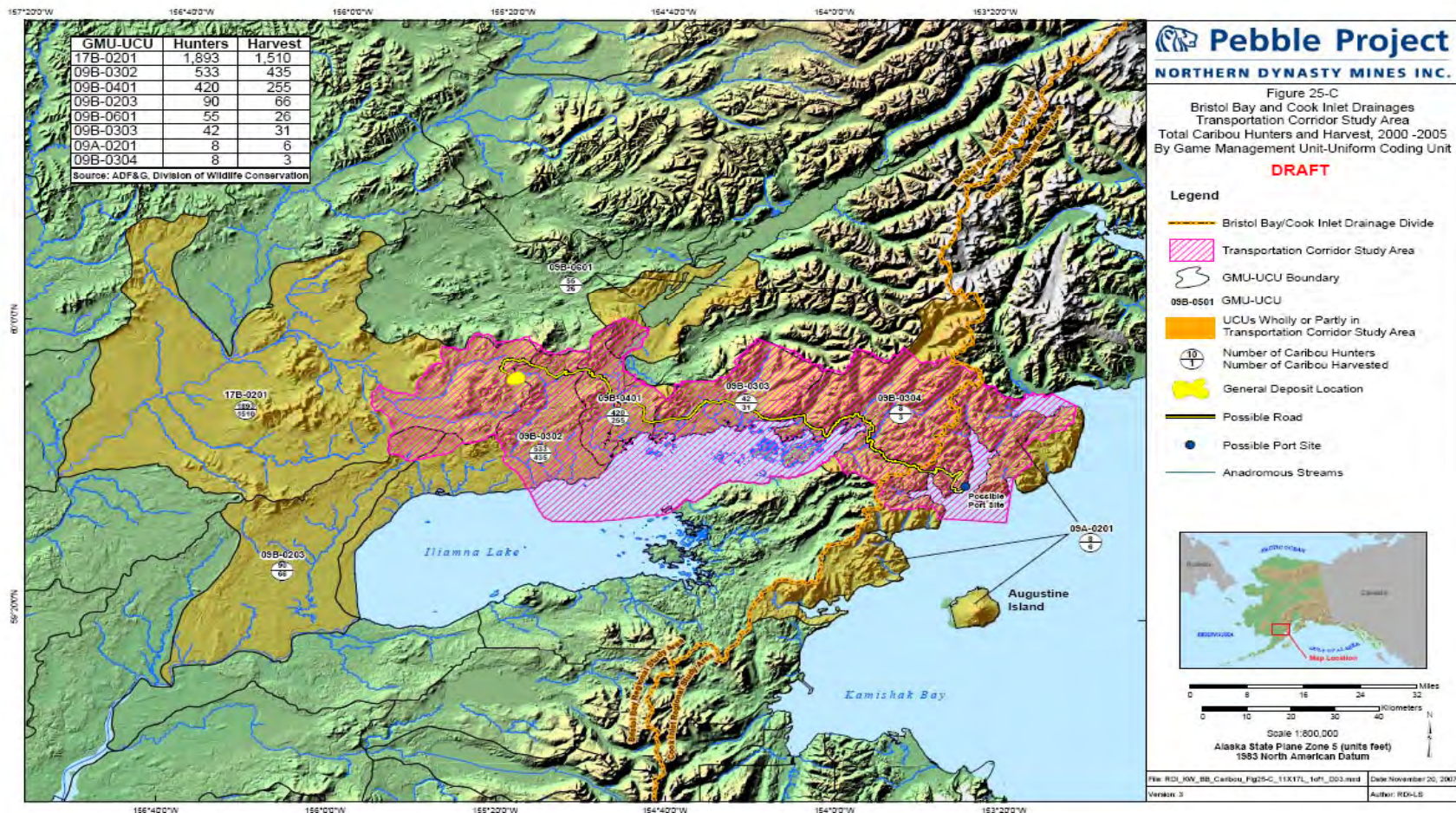
# Expanded Big Game Hunting Study Area



Source: Alaska Department of Fish & Game, Wildlife Conservation Division.  
Note: Similar maps for moose and brown bear in Regional Study Area.

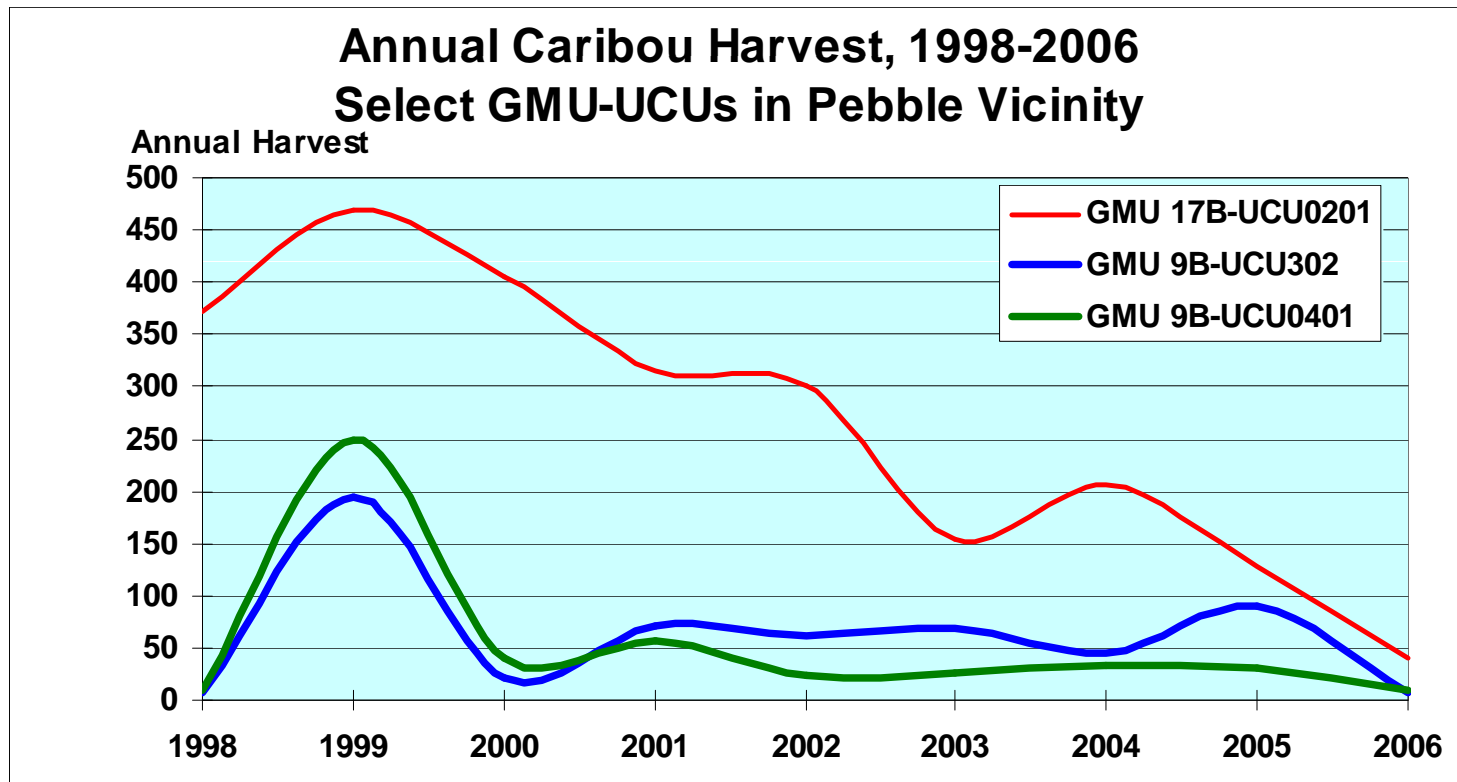


# Caribou Hunters and Harvest Pebble Project Vicinity, 2000-2005



Source: Alaska Department of Fish & Game, Wildlife Conservation Division.  
Note: Similar maps for moose and brown bear in Pebble Project vicinity.

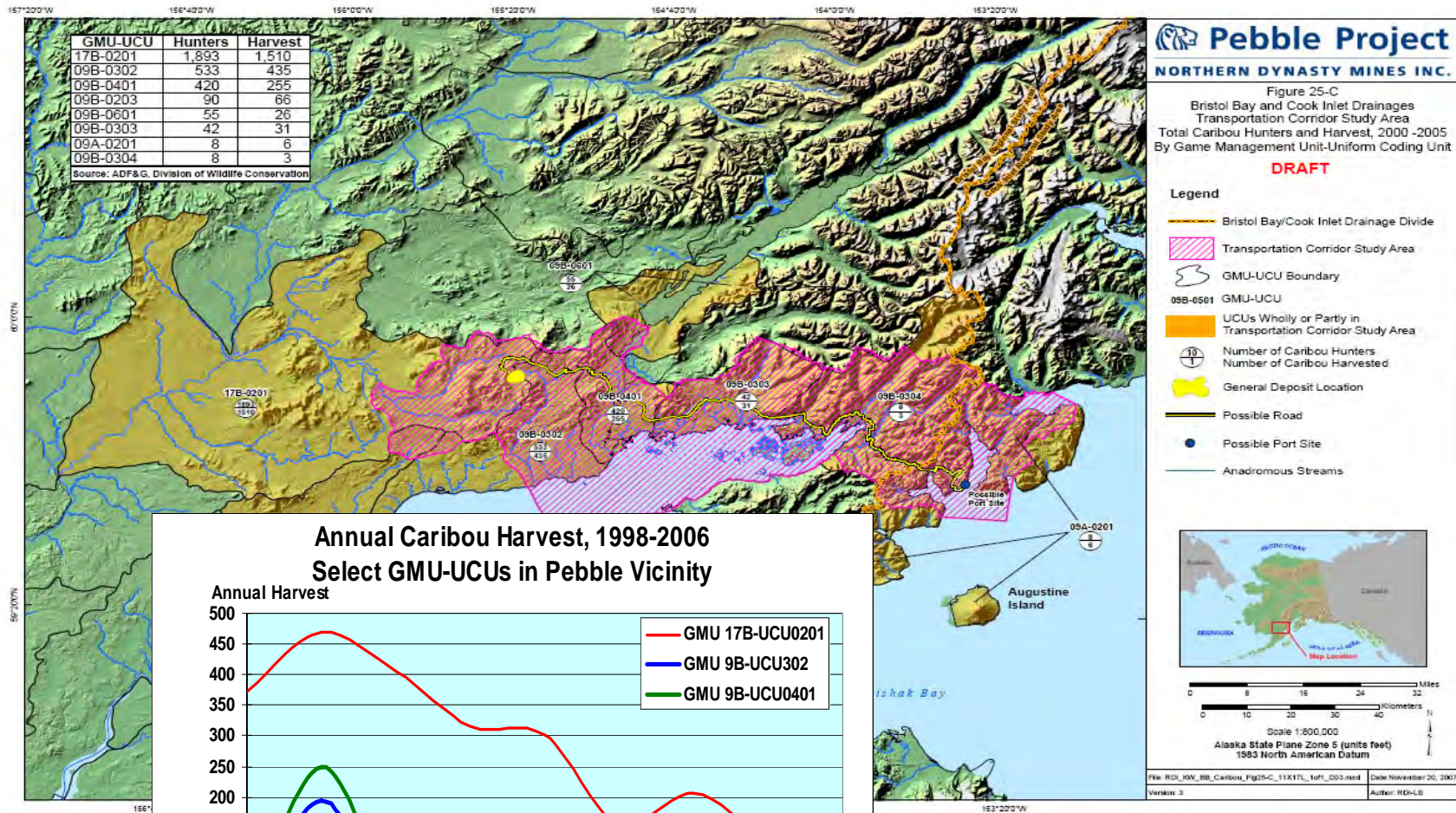
# Recent Trends in Caribou Harvest 1998-2006 in Pebble Vicinity



Source: Alaska Department of Fish & Game, Wildlife Conservation Division.



# Caribou Hunters and Harvest Pebble Project Vicinity, 2000-2005



Source:  
Note: Si

ervation Division.  
project vicinity.

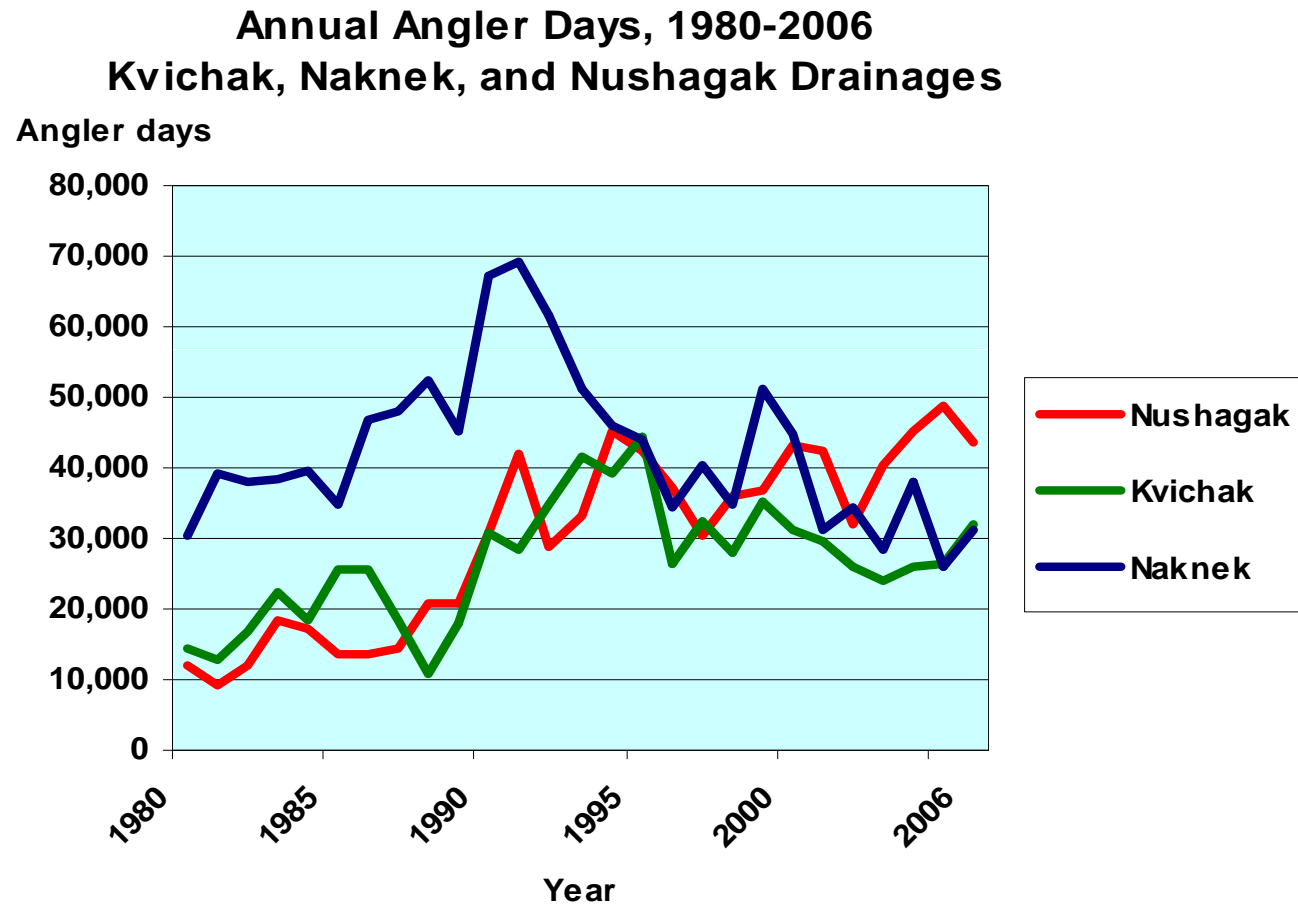
## **Major Findings Regarding Caribou**

1. Ongoing decline in Mulchatna caribou herd population
2. Migration of Mulchatna herd away from Pebble vicinity
3. Ongoing decline in caribou hunting and harvest in Pebble vicinity
4. Need for more localized spatial analysis of caribou hunting activity in Pebble vicinity





# Sportfishing Trends in Study Area Drainages



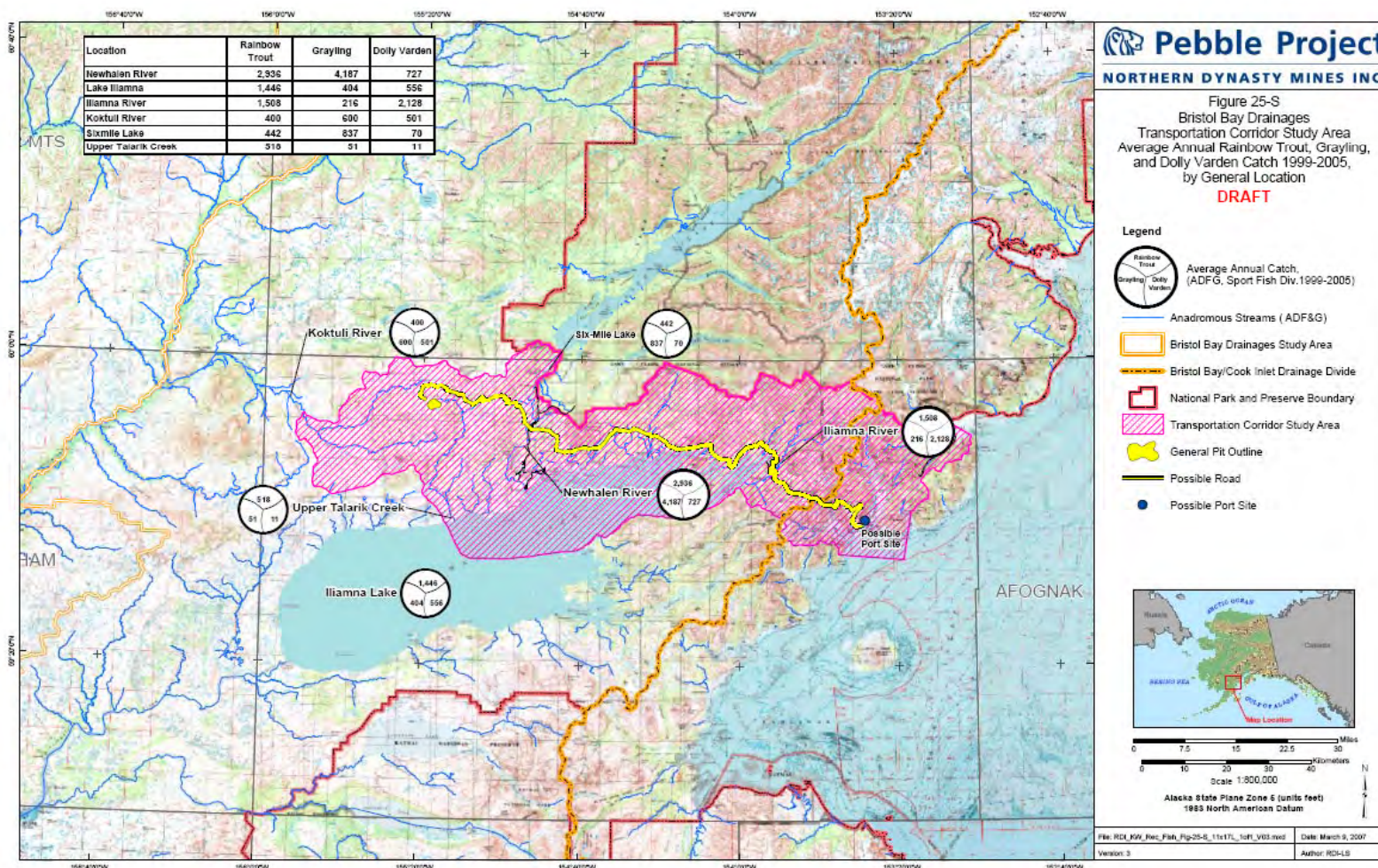
Source: Alaska Department of Fish & Game, Sport Fish Division.



## Sportfishing in Study Area-wide Perspective

Average Annual Sportfishing Effort and Catch 55 Locations in Study Area, 1999-2005				
Location	Days Fished		Catch	
	Number	Rank	Number	Rank
Naknek River (downstream from Rapids Camp, incl. tributaries)	9,434	1	24,378	5
Nushagak River (Sonar Site to Mulchatna)	7,939	2	48,912	2
Alagnak River	7,142	3	60,399	1
Naknek River (Rapids Camp upstream to Naknek Lake, Incl. tributaries)	6,414	4	29,849	4
Kvichak River	5,371	5	35,885	3
Nushagak River (Black Pt. to Sonar Site)	4,594	6	22,366	6
Nushagak River (upstream from Mulchatna)	2,747	7	22,241	7
Brooks River	2,649	8	16,088	11
Newhalen River	2,567	9	17,541	10
Other Nushagak River System	2,498	10	15,749	12
Lower Talarik Creek	671	21	3,669	25
Koktuli River	417	25	3,234	27
Upper Talarik Creek	78	51	619	47
. . . 42 locations omitted . . .				
<b>Total</b>	<b>75,141</b>		<b>458,624</b>	
Source: Alaska Department of Fish & Game, Sport Fish Division.				

# Average Annual Catch, Pebble Project Vicinity Rainbow Trout, Grayling, Dolly Varden, 1999-2005



Source: Alaska Department of Fish & Game, Sport Fish Division.

Note: Updated maps also prepared for sockeye, king, and coho salmon.



# Sportfishing Trends in Statewide Picture

**Annual Angler Days, 1999-2006  
Kvichak, Naknek, and Nushagak Drainages as  
Percent of Statewide Total**

