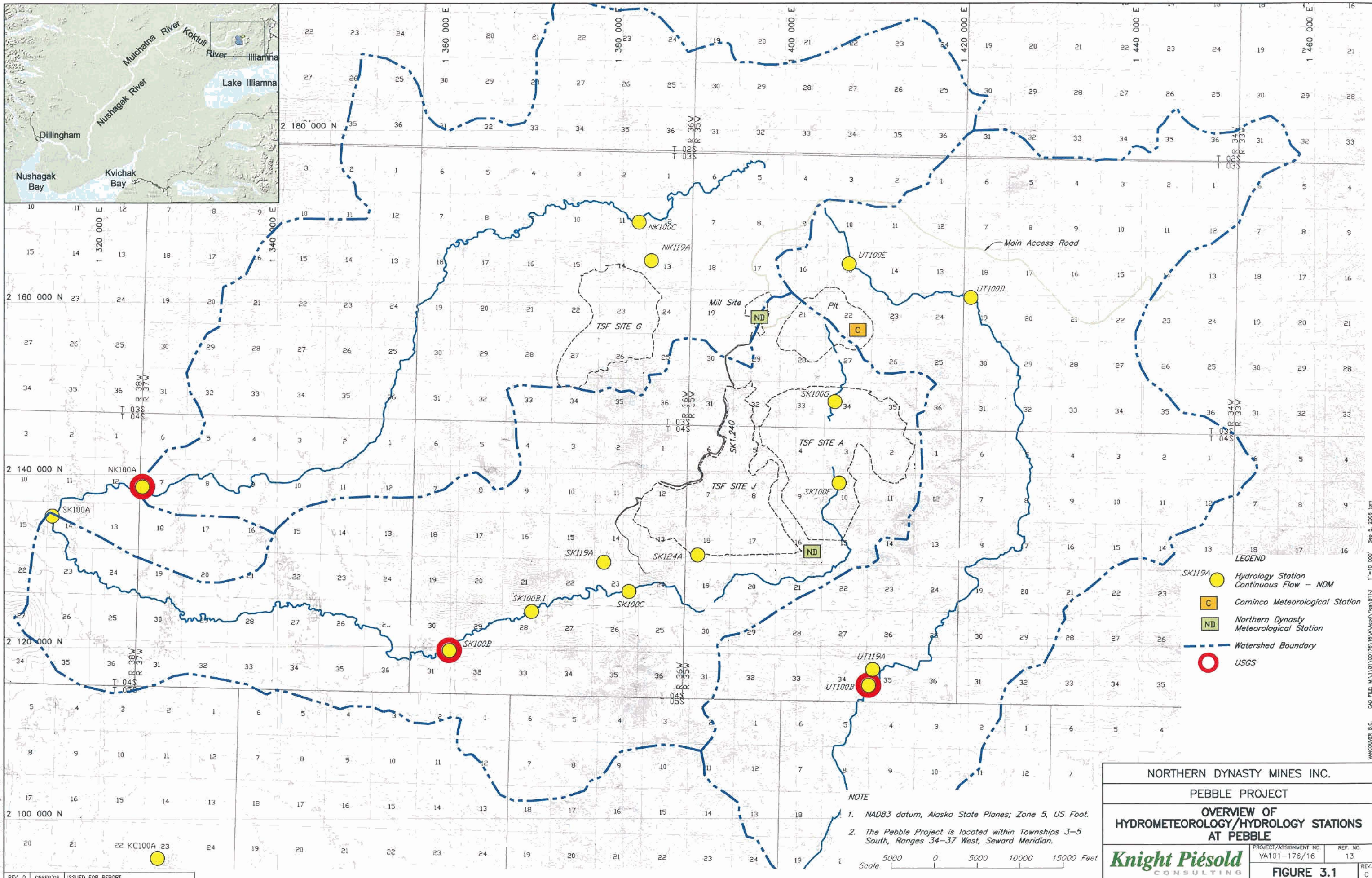


XREF FILE : IMAGE - Location.TIF

CAD FILE # \1\01\00176\16\A\res\A\Fig\1.1.dwg Plot: 1-(P) AUG 30, 2006

NORTHERN DYNASTY MINES INC.			
PEBBLE PROJECT			
PROJECT LOCATION			
<i>Knight Piésold</i> CONSULTING		PROJECT/ASSIGNMENT NO. VA101-176/16	REF. NO. 13
		FIGURE 1.1	
REV. 0	05SEP06	ISSUED FOR REPORT	REV. 0



- LEGEND**
- Hydrology Station
Continuous Flow – NDM
 - C Cominco Meteorological Station
 - ND Northern Dynasty
Meteorological Station
 - Watershed Boundary
 - USGS

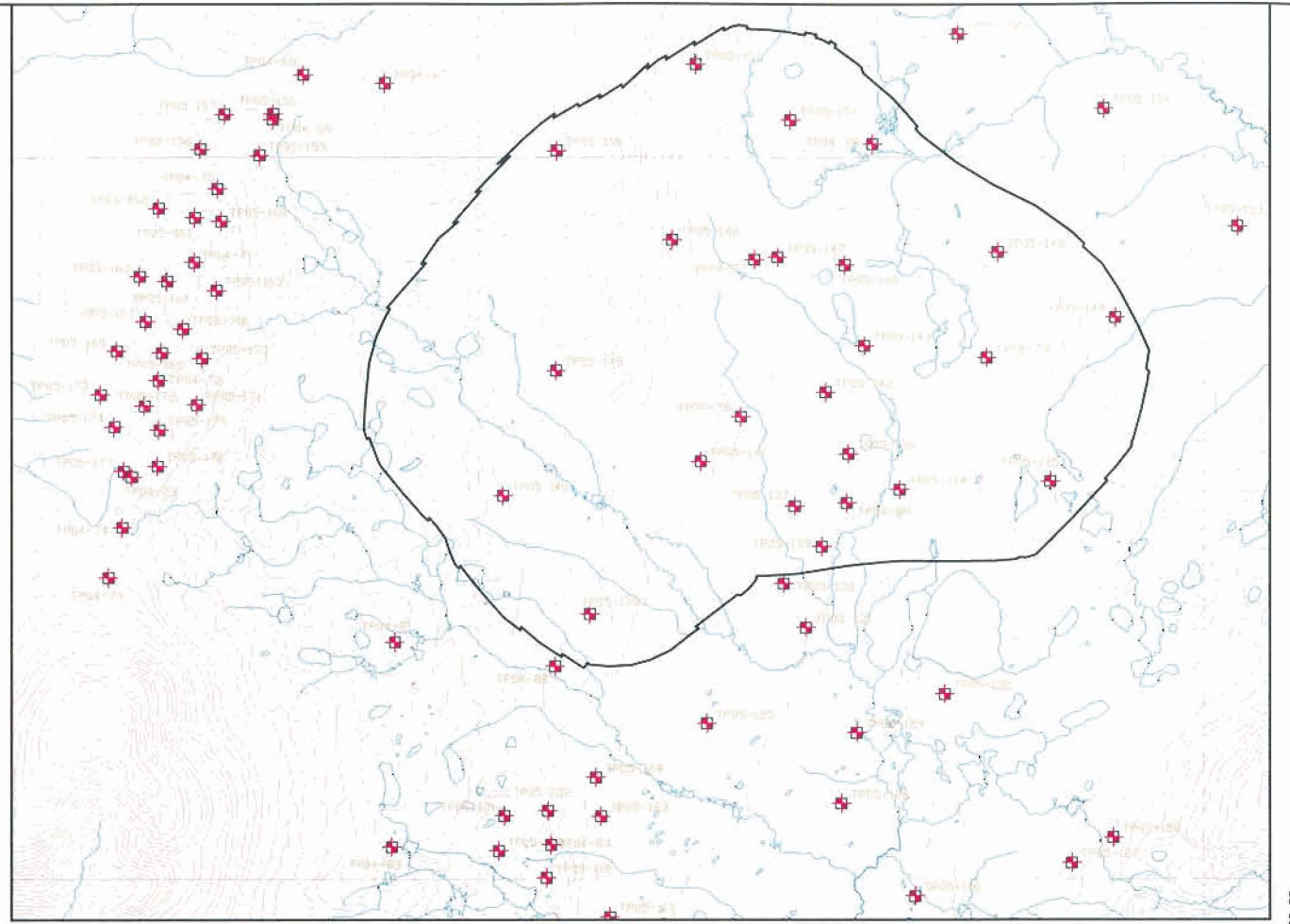
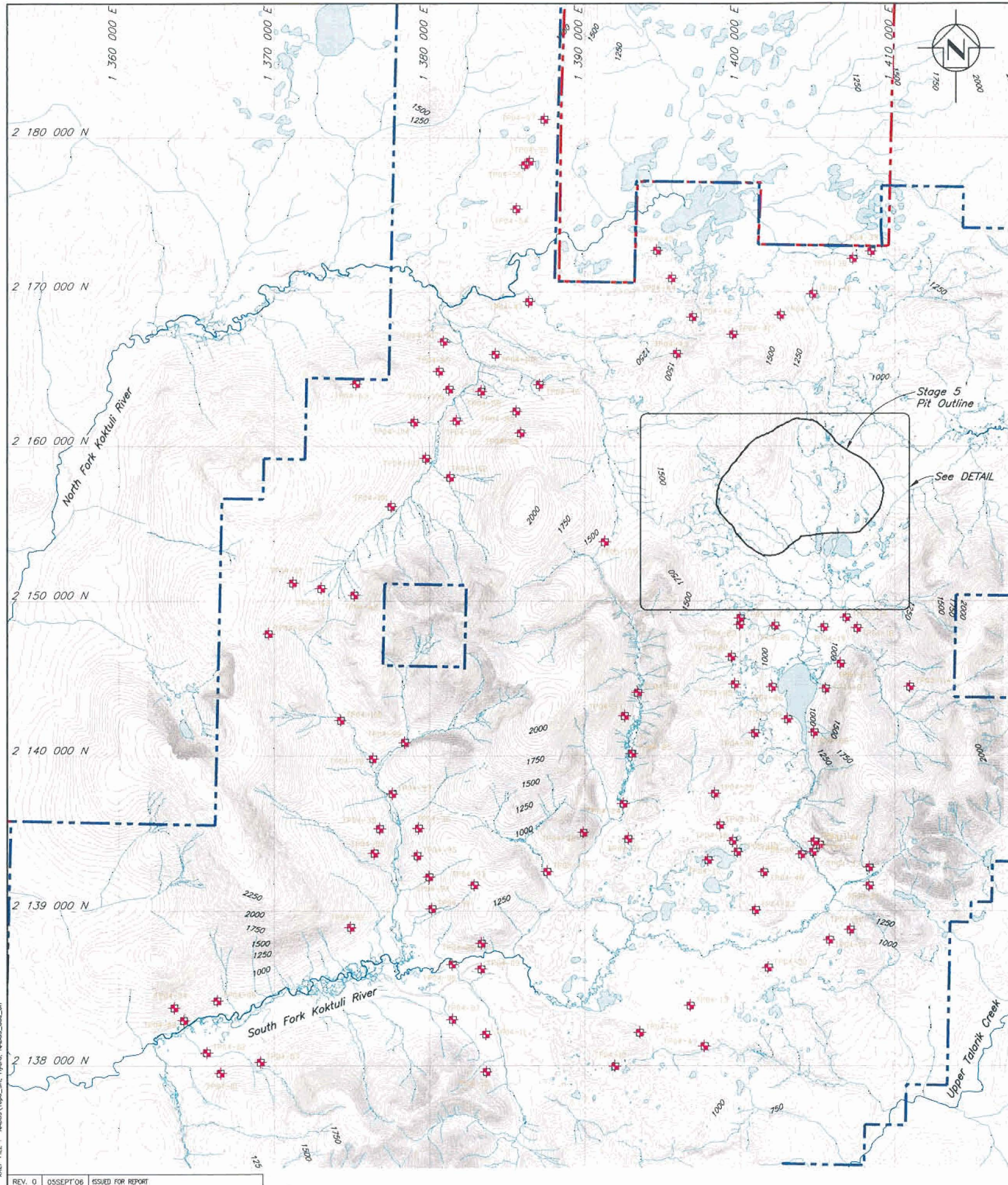
NOTE

1. NAD83 datum, Alaska State Planes; Zone 5, US Foot.
2. The Pebble Project is located within Townships 3–5 South, Ranges 34–37 West, Seward Meridian.

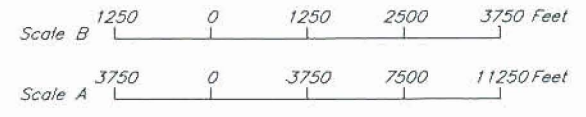
Scale 0 5000 10000 15000 Feet

NORTHERN DYNASTY MINES INC.	
PEBBLE PROJECT	
OVERVIEW OF HYDROMETEOROLOGY/HYDROLOGY STATIONS AT PEBBLE	
PROJECT/ASSIGNMENT NO. VA101-176/16	REF. NO. 13
FIGURE 3.1	
<small>REV. 0</small>	

W:\COVER 8.C
CAD FILE: M:\10100176\VA\Asset\Fig\B113 1"=10,000' Sep 5, 2006 km



PIT AND MILL SITE DETAIL
Scale B



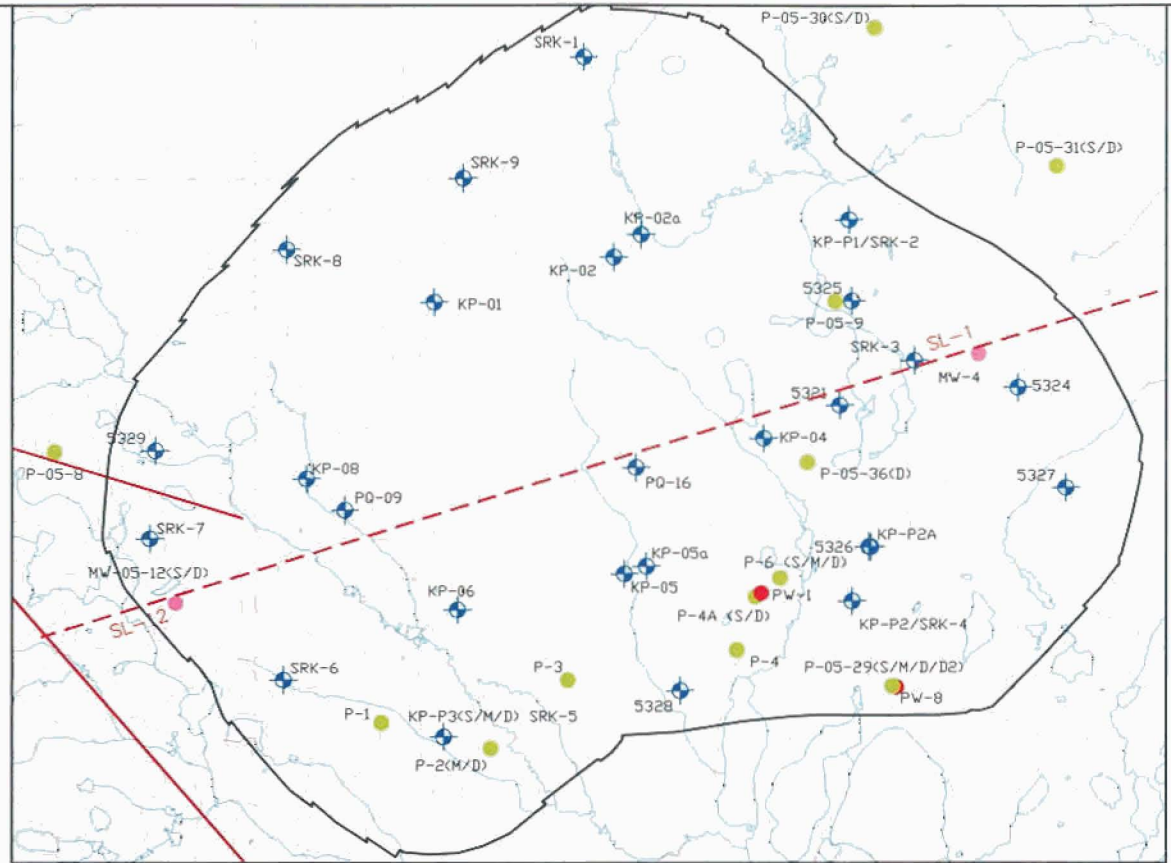
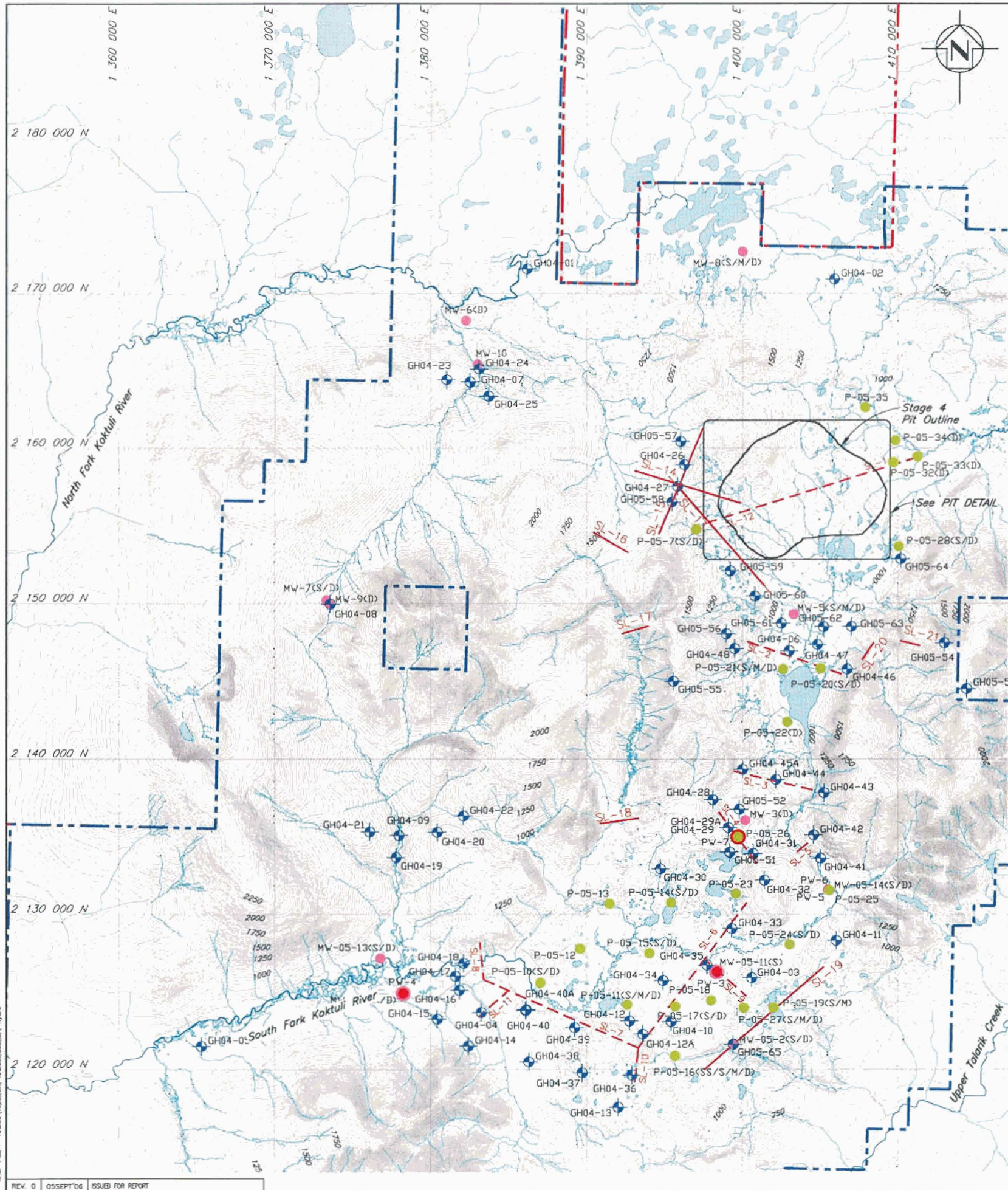
- LEGEND**
- Current NDM Mineral Claim Boundary
 - Other Claim Boundary
 - + Completed Test Pits in 2004
 - + Completed Test Pits in 2005

NORTHERN DYNASTY MINES INC.			
PEBBLE PROJECT			
TEST PIT LOCATION PLAN			
Knight Piésold CONSULTING	PROJECT/ASSIGNMENT NO.	REF. NO.	REV.
	VA101-176/16	13	0
FIGURE 3.2			

XREF FILE: NDM03\Topo_SIT_Hydris_NDM03_solid_en

REV. 0 05SEPT'06 ISSUED FOR REPORT

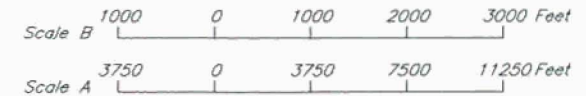
CAD FILE: M:\1\01\00176\16\Acad\Figs\B1DB.dwg 1=7500' Plot 1=11" AUG 29, 2006 SC VANCOUVER B.C.



PIT DETAIL
Scale B

- LEGEND**
- Current NDM Mineral Claim Boundary
 - Other Claim Boundary
 - GH04-1 Geotechnical Drillholes Completed in 2004
 - GH05-51 Geotechnical Drillholes Completed in 2005
 - P-1 Completed Supplementary MW or Regional Piezometer
 - PW-1 Completed Pumping Test Location
 - MW-1 Completed Baseline Monitoring Wells
 - - - 2004 Seismic Line
 - - - 2005 Seismic Line

- NOTES**
1. Piezometers installed in all Geotechnical Drillholes excluding oriented core holes.
 2. As of Nov 8, 2005.

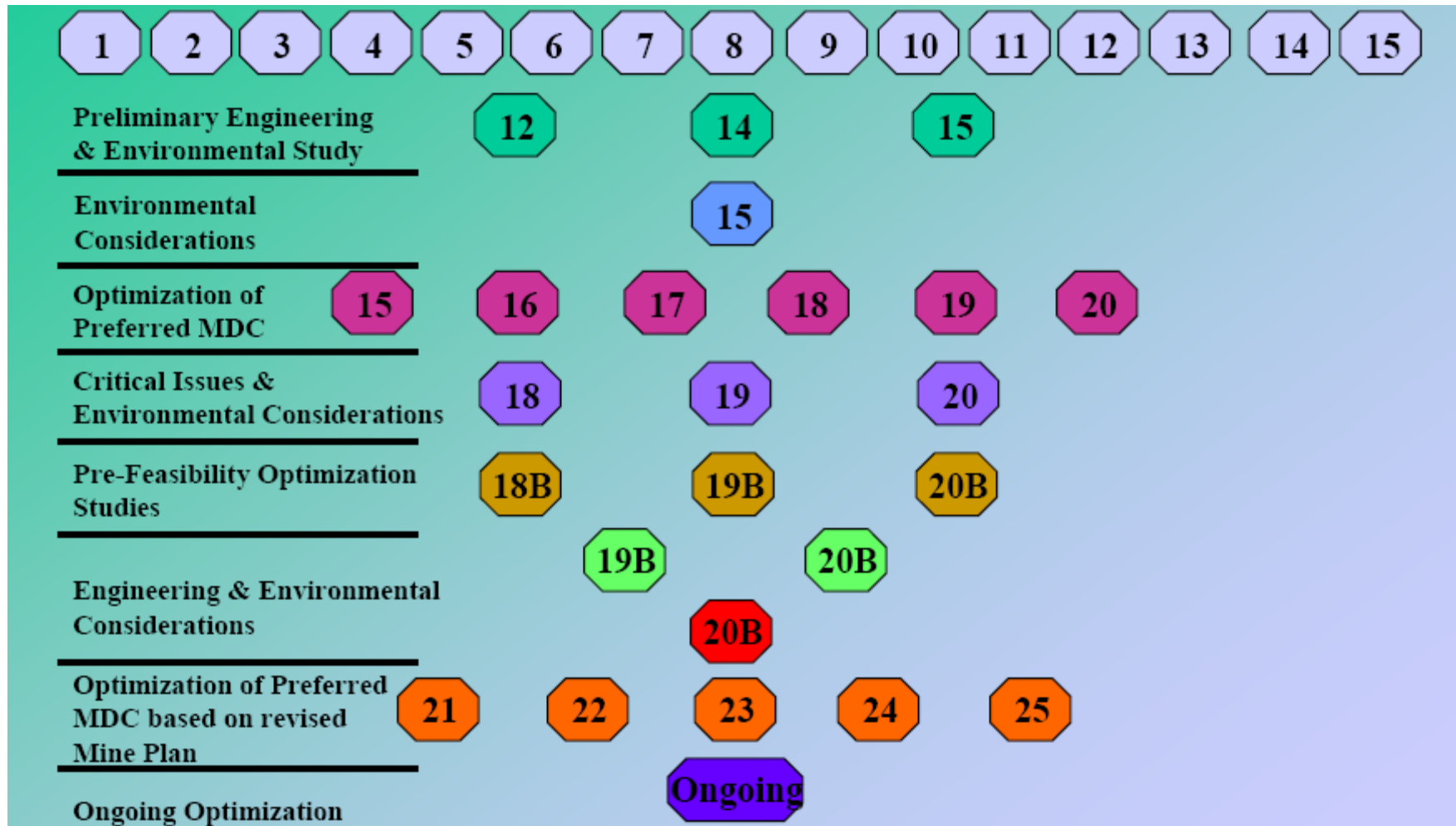


NORTHERN DYNASTY MINES INC.			
PEBBLE PROJECT			
GEOTECHNICAL DRILLHOLE LOCATION PLAN			
Knight Piésold CONSULTING	PROJECT/ASSIGNMENT NO. VA101-176/16	REF. NO. 13	REV. 0
	FIGURE 3.3		

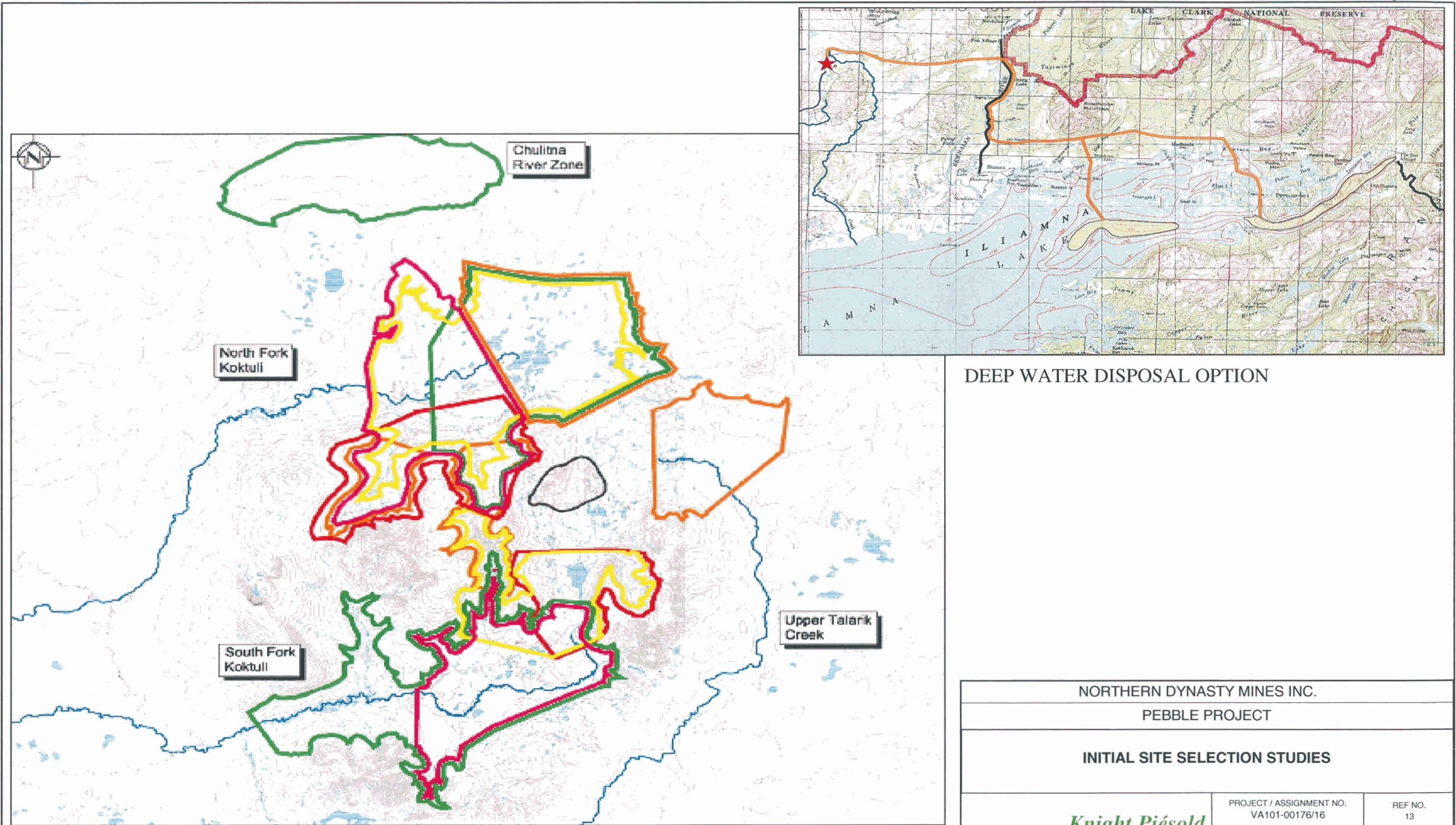
XREF FILE : M0033\Topo_S11_M0033_001.dwg, Hydro

REV. 0 05SEP106 ISSUED FOR REPORT

CAD FILE: M:\01\00176\16\A\Acad\Tops\B116.dwg 1=7500 & 1=2000 Plot 1=(PS) Aug 29, 2006 SC

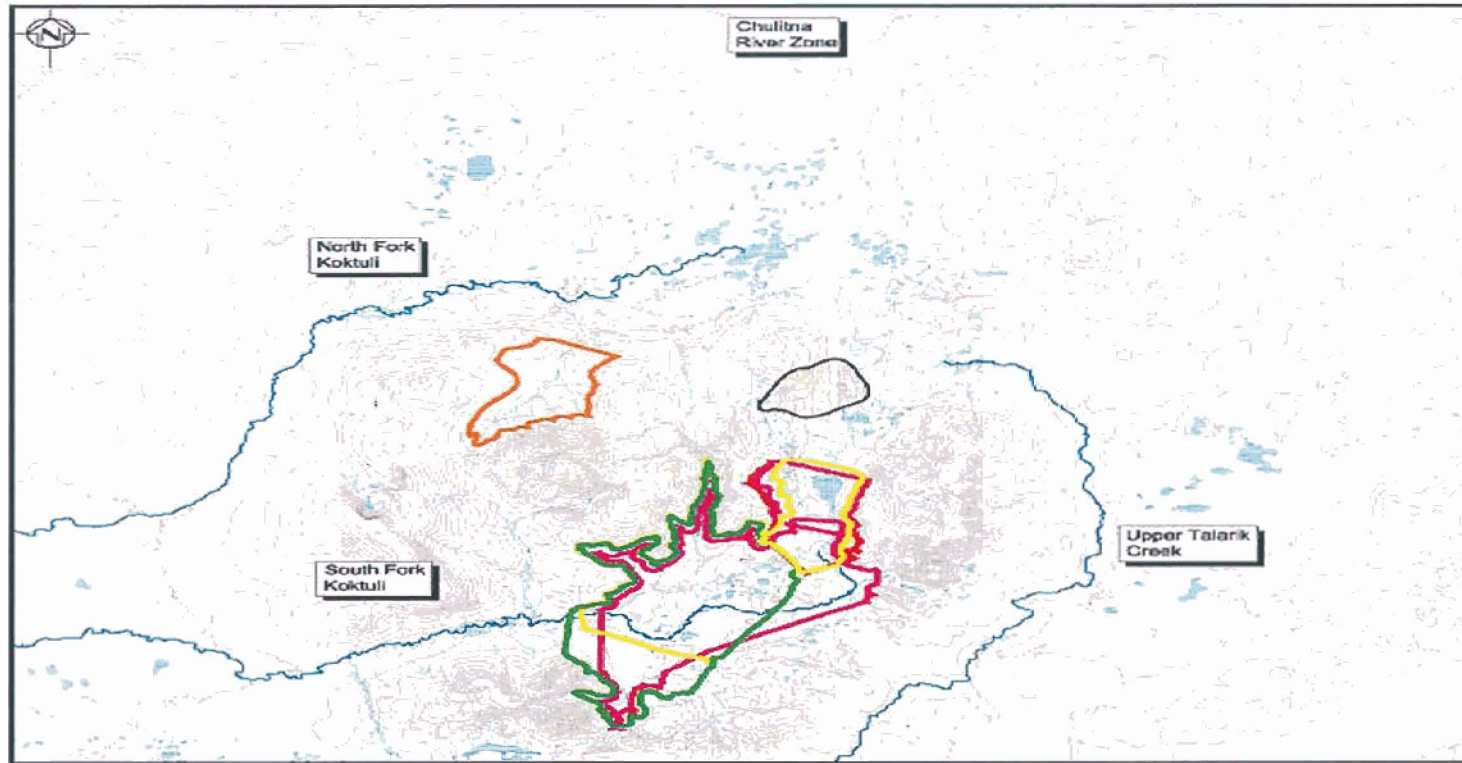


NORTHERN DYNASTY MINES INC.		
PEBBLE PROJECT		
OVERVIEW OF SITE SELECTION PROCESS		
<i>Knight Piésold</i> CONSULTING	PROJECT / ASSIGNMENT NO. VA101-00176/16	REF NO. 13
	FIGURE 4.1	
		REV. 0

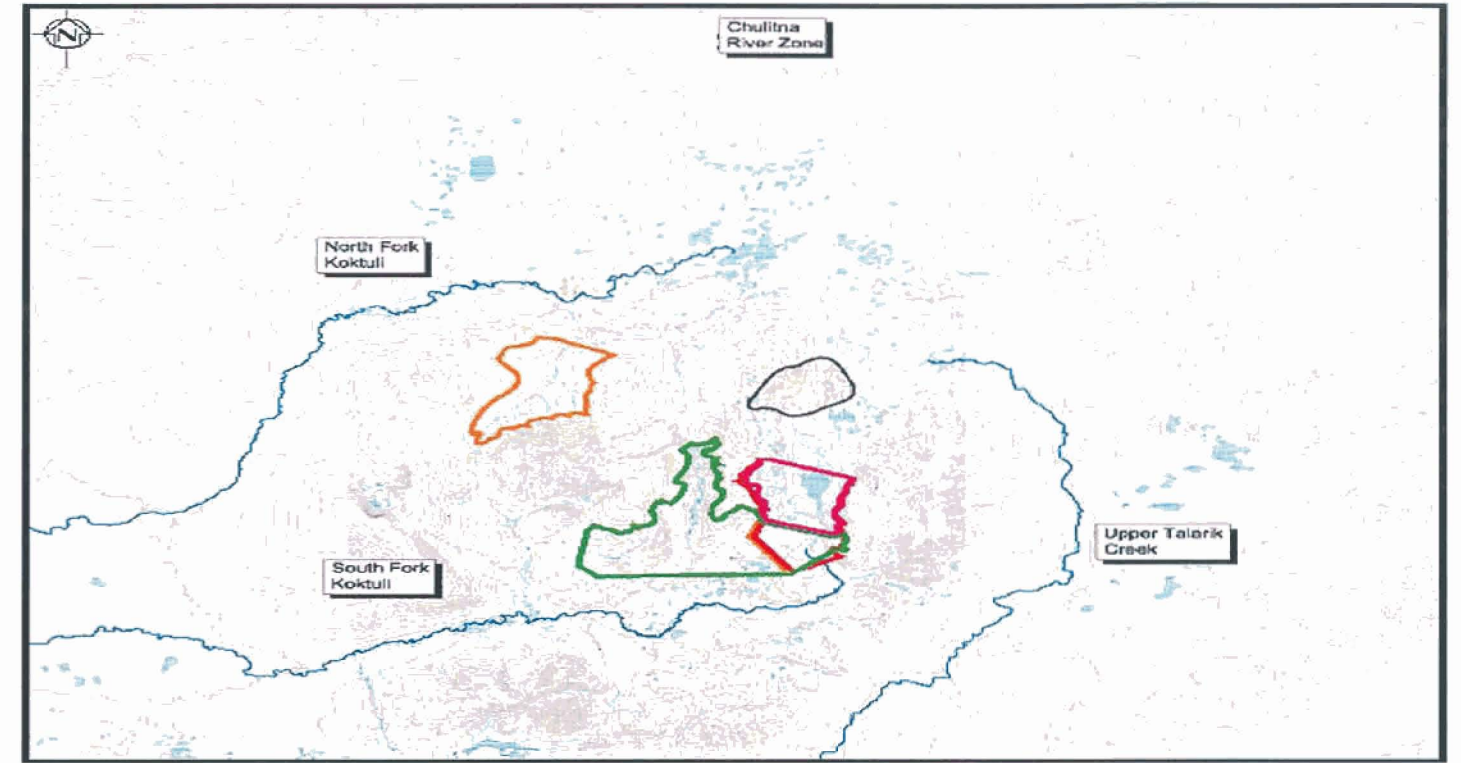


DEEP WATER DISPOSAL OPTION

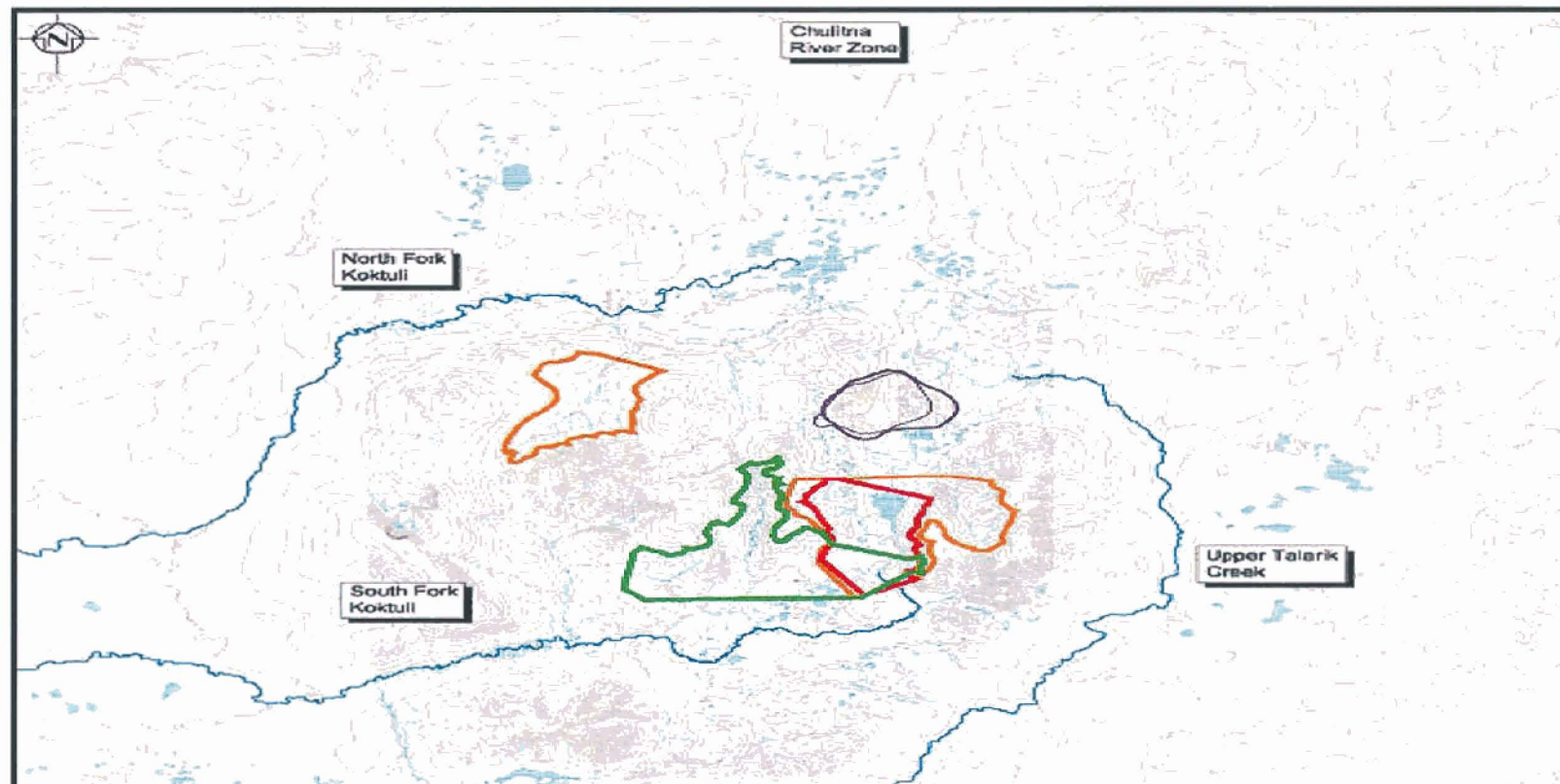
NORTHERN DYNASTY MINES INC.		
PEBBLE PROJECT		
INITIAL SITE SELECTION STUDIES		
	PROJECT / ASSIGNMENT NO. VA101-00176/16	REF NO. 13
	<p align="center">FIGURE 4.2</p>	
		REV. 0



MDC 16 - 20

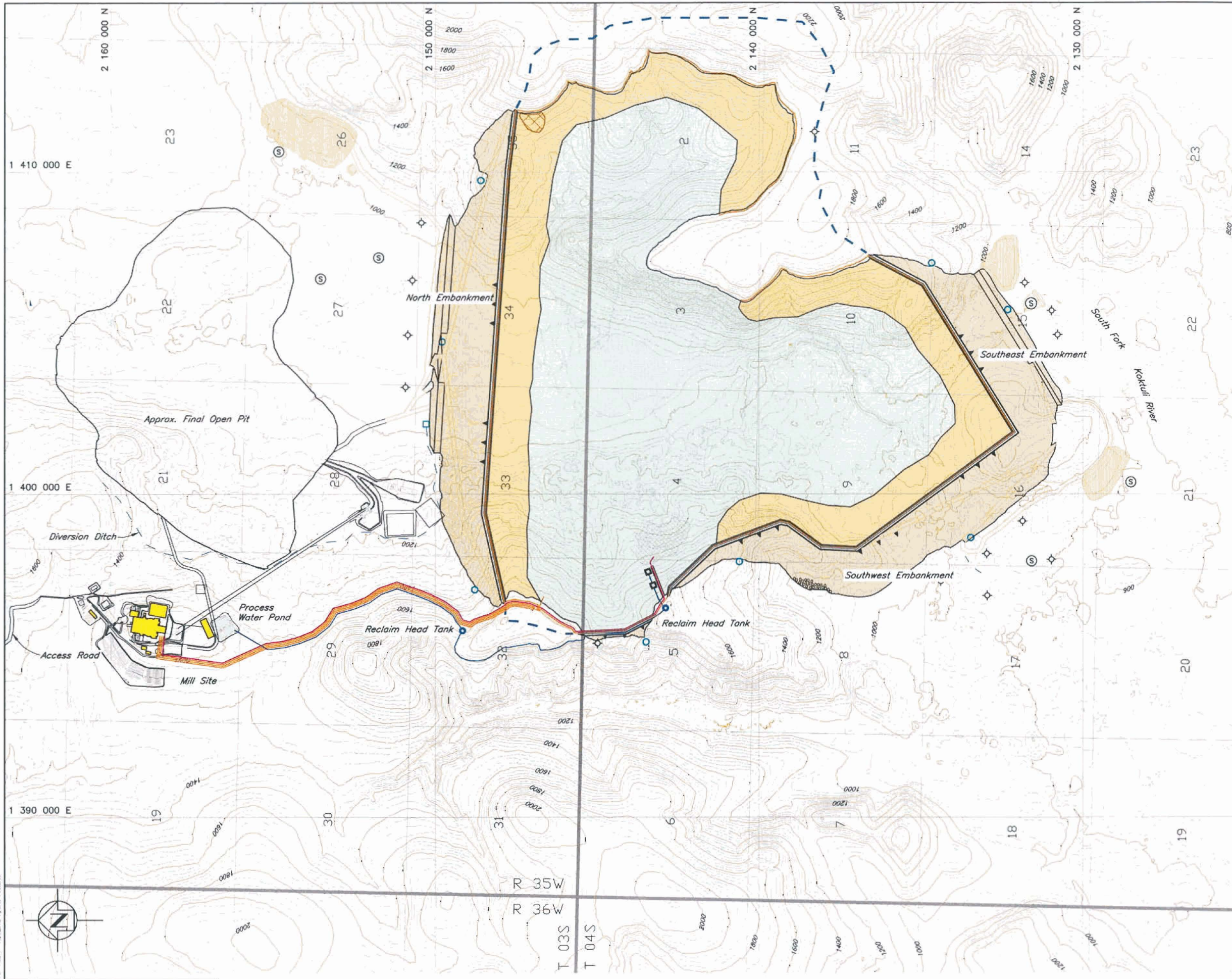


MDC 18B, 19B and 20B



MDC 21 - 25

NORTHERN DYNASTY MINES INC.		
PEBBLE PROJECT		
SUBSEQUENT AND ONGOING SITE SELECTION STUDIES		
	PROJECT / ASSIGNMENT NO. VA101-00176/16	REF NO. 13
	FIGURE 4.3	
		REV. 0



- LEGEND**
- Tailings Beach
 - Supernatant Pond
 - Non-reactive Mine Rock
 - Potentially Reactive Waste Rock
 - Potentially Reactive Tailings
 - TSF Catchment Boundary
 - Bulk Tailings Slurry Pipeline
 - Pyritic Tailings Slurry Pipeline
 - Reclaim Pipeline
 - Roads
 - Monitoring Well
 - S Sediment Control
 - Seepage Collection Sump
 - Surface Runoff Collection Point
 - Topsoil Stockpile
 - Zone S (Core) Stockpile
 - Reclaim Barge
 - Diversion Ditch

- NOTE**
1. Mine site topography information is in NAD83 Alaska State Plane Zone 5 Foot. Outer stream/lake features have been incorporated from NAD27 information. Contour interval shown is 25 ft. Information provided by Eagle Mapping, Nov. 2004.
 2. The Pebble Project is located within Townships 3-5 South, Ranges 34-37 West, Seward Meridian.

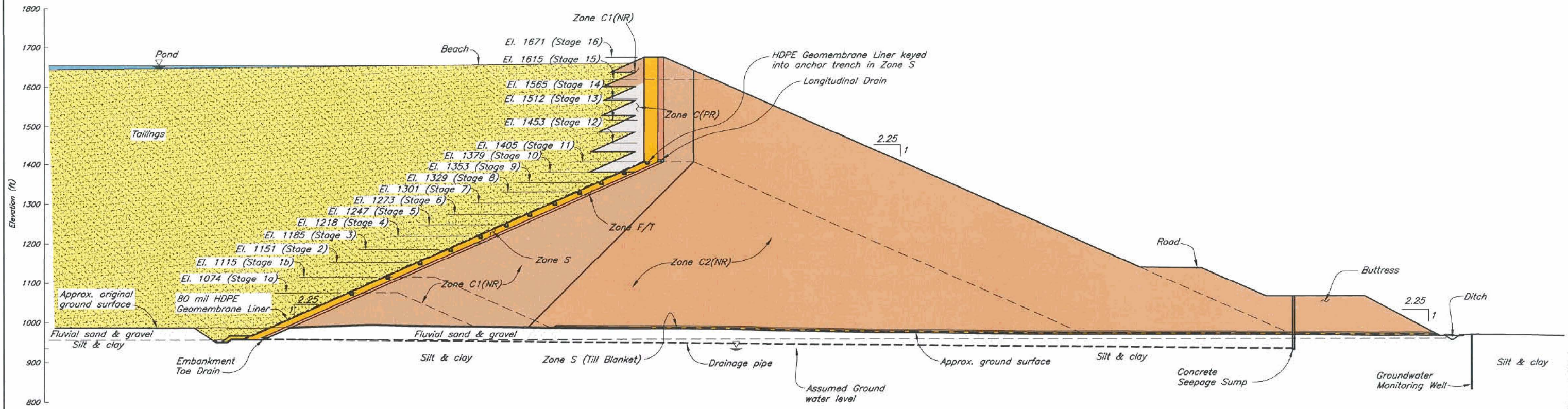
DRAFT

FOR DISCUSSION ONLY



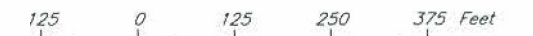
NORTHERN DYNASTY MINES INC.		
PEBBLE PROJECT		
TAILINGS STORAGE FACILITY – SITE A GENERAL ARRANGEMENT		
Knight Piésold CONSULTING	PROJECT/ASSIGNMENT NO. VA101-176/16	REF. NO. 13
	FIGURE 5.1	
		REV. 0



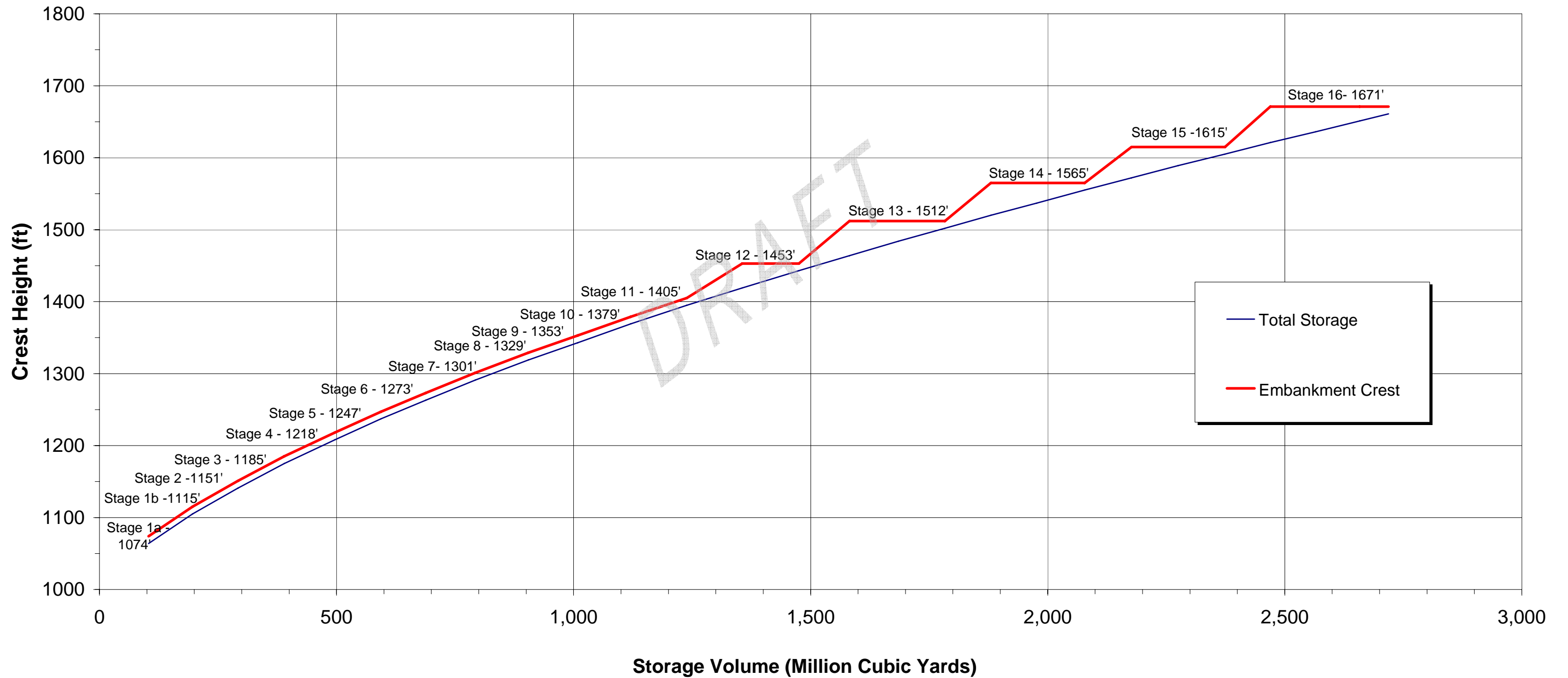


DRAFT

FOR DISCUSSION ONLY



NORTHERN DYNASTY MINES INC.		
PEBBLE PROJECT		
TAILINGS DAM PRELIMINARY TYPICAL CROSS-SECTION		
Knight Piésold CONSULTING	PROJECT/ASSIGNMENT NO. VA101-176/16	REF. NO. 13
FIGURE 5.2		REV. 0

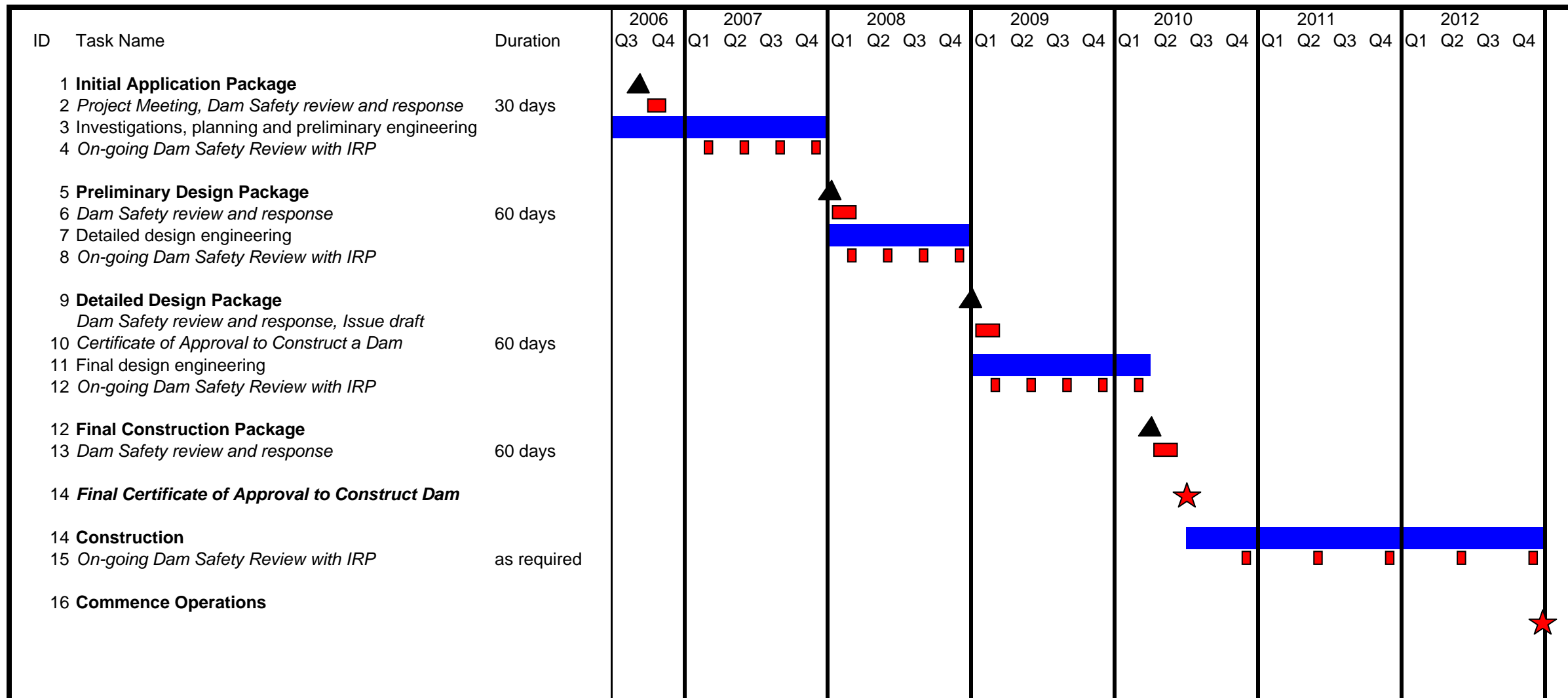


NOTES:

- 1) Total Storage Volume Includes PR Waste, Tailings, Supernatant Pond and Storm Containment
- 2) Embankment Crest Elevation Includes 10 ft. freeboard

Rev 0 - Issued for Report

NORTHERN DYNASTY MNES INC.		
PEBBLE PROJECT		
TAILINGS STORAGE FACILITY SITE A FILLING SCHEDULE		
<i>Knight Piésold</i> CONSULTING	PROJECT / ASSIGNMENT NO. VA101-176/16	REF NO. 13
	FIGURE 5.3	
		REV. 0



NORTHERN DYNASTY MINES INC			
PEBBLE PROJECT			
TAILINGS IMPOUNDMENT A - INITIAL APPLICATION REPORT DAM SAFETY APPLICATION AND REVIEW PROCESS			
<i>Knight Piésold</i> CONSULTING	PROJECT / ASSIGNMENT NO. VA101-176/16	REF NO. 13	REV. 0
	FIGURE 5.4		

Rev 0 - Issued for Report