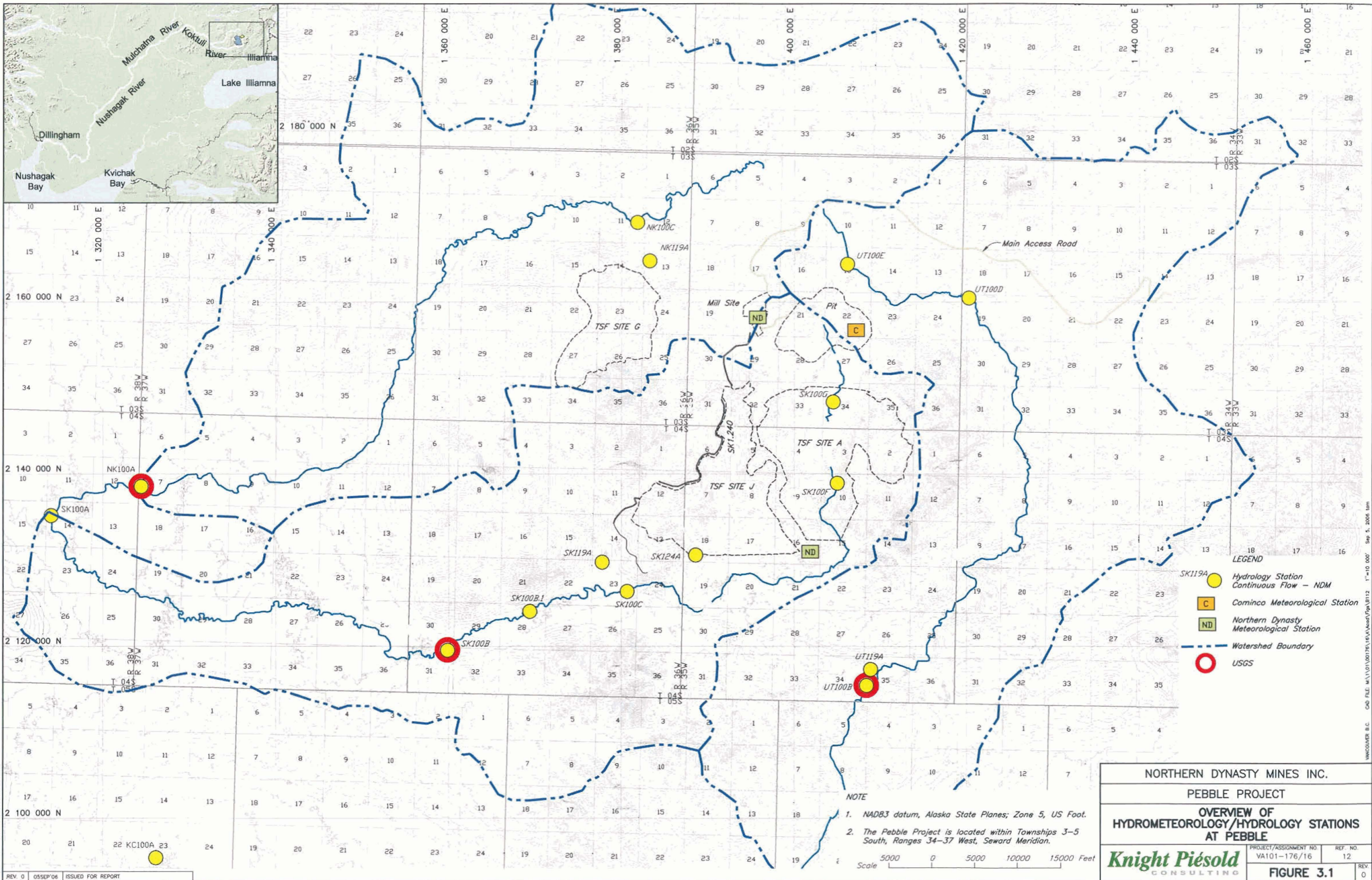


VANCOUVER B.C. CAD FILE: M:\1\001\00176\16\VA\Asst\Fig\VA1 - 1 (PS). AUG 30, 2006

XREF FILE : IMAGE_Location.TIF

REV. 0	05SEP06	ISSUED FOR REPORT
--------	---------	-------------------

NORTHERN DYNASTY MINES INC.	
PEBBLE PROJECT	
PROJECT LOCATION	
	PROJECT/ASSIGNMENT NO. VA101-176/16
	REF. NO. 12
FIGURE 1.1	
	REV. 0



- LEGEND**
- SK119A Hydrology Station Continuous Flow - NDM
 - C Cominco Meteorological Station
 - ND Northern Dynasty Meteorological Station
 - Watershed Boundary
 - USGS

NOTE

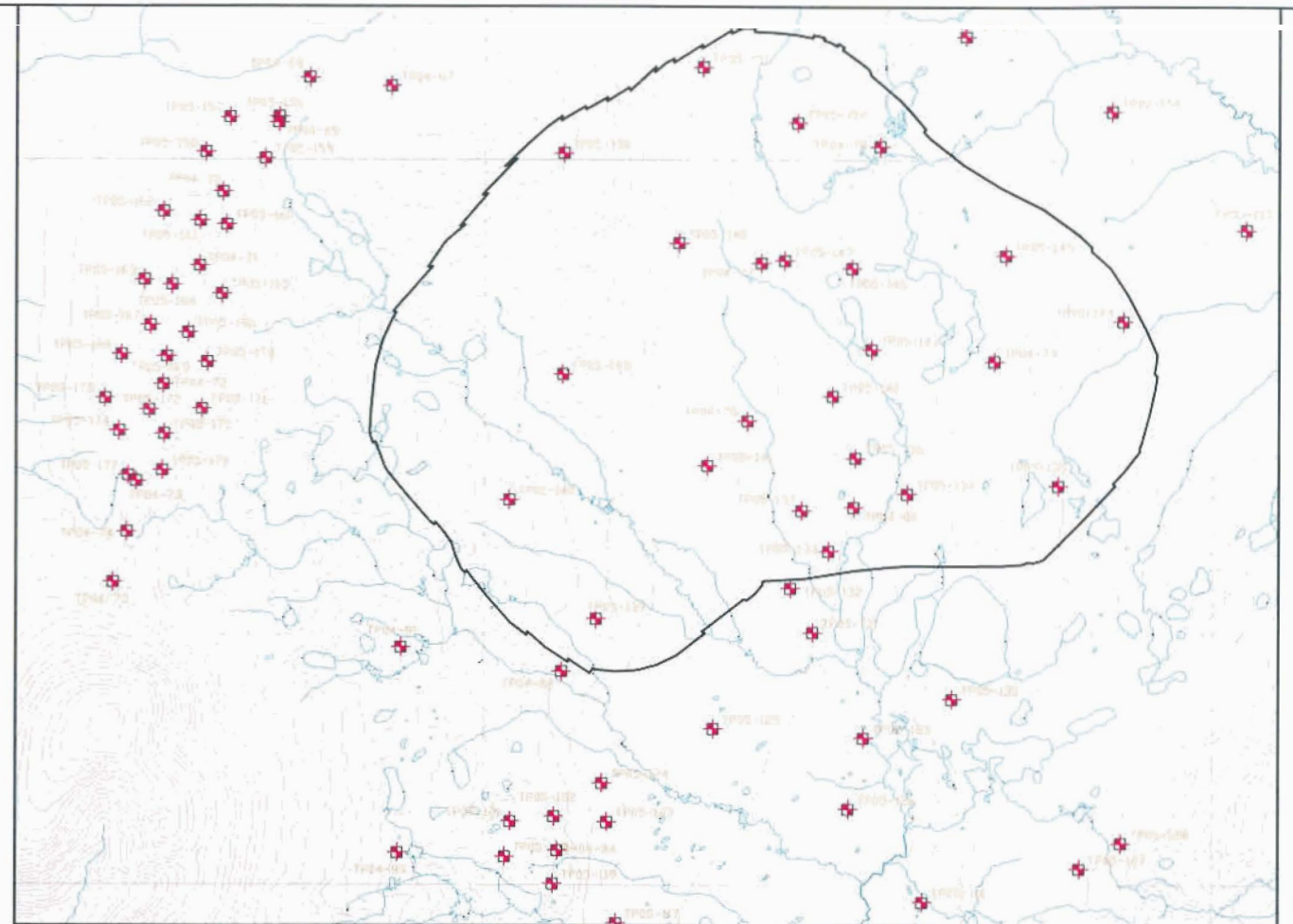
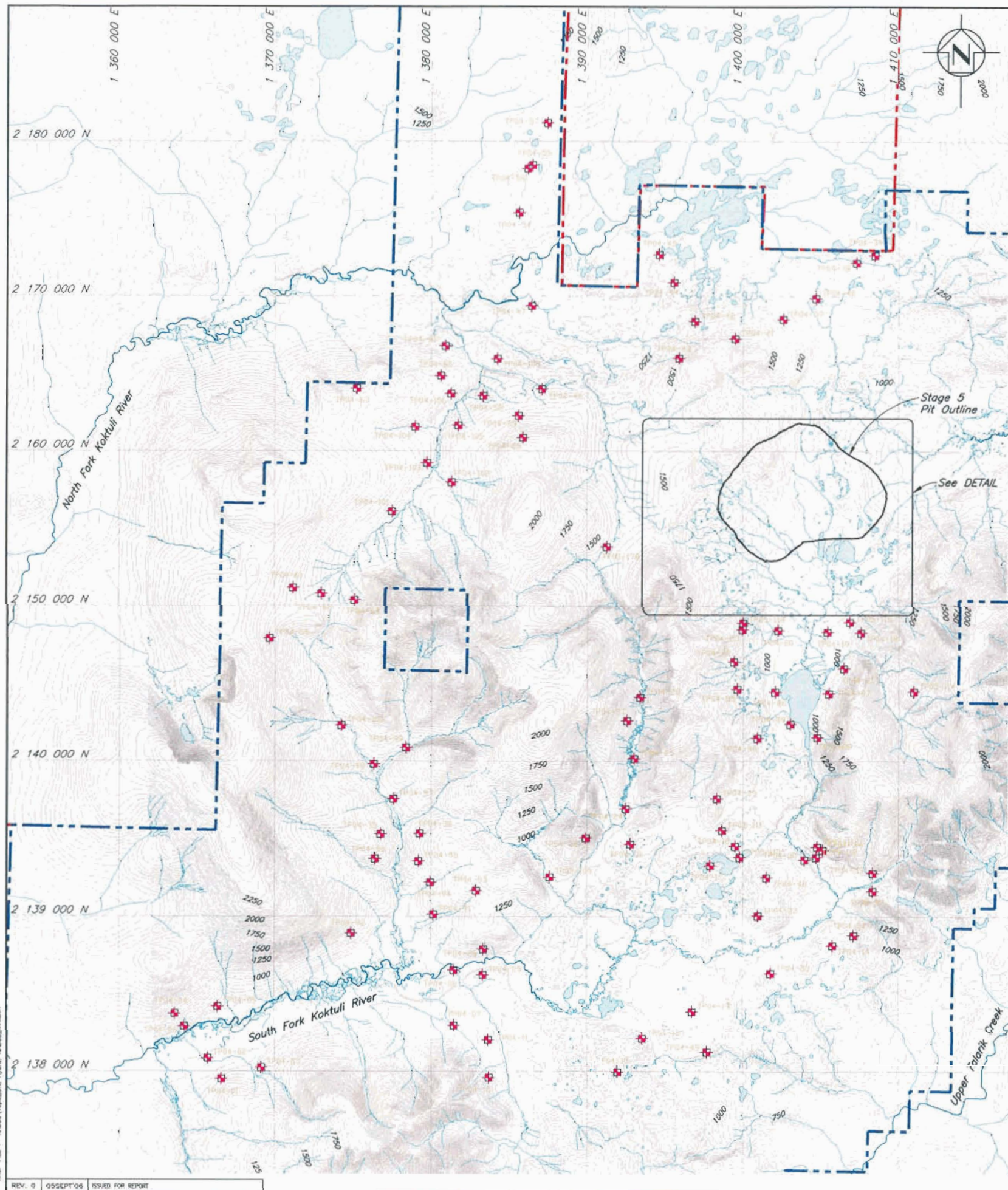
1. NAD83 datum, Alaska State Planes; Zone 5, US Foot.
2. The Pebble Project is located within Townships 3-5 South, Ranges 34-37 West, Seward Meridian.

Scale 0 5000 10000 15000 Feet

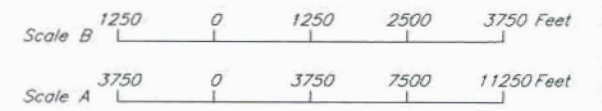
NORTHERN DYNASTY MINES INC.	
PEBBLE PROJECT	
OVERVIEW OF HYDROMETEOROLOGY/HYDROLOGY STATIONS AT PEBBLE	
PROJECT/ASSIGNMENT NO. VA101-176/16	REF. NO. 12
Knight Piésold CONSULTING	
FIGURE 3.1	

REV. 0 05SEP'06 ISSUED FOR REPORT

CAD FILE: M:\1\01\00176\16\VA\Asset\Fig\B112 1"=10' 00" Sep 5, 2006 10m



PIT AND MILL SITE DETAIL
Scale B



LEGEND

- Current NDM Mineral Claim Boundary
- Other Claim Boundary
- ★ Completed Test Pits in 2004
- ★ Completed Test Pits in 2005

NORTHERN DYNASTY MINES INC.

PEBBLE PROJECT

TEST PIT LOCATION PLAN

Knight Piésold
CONSULTING

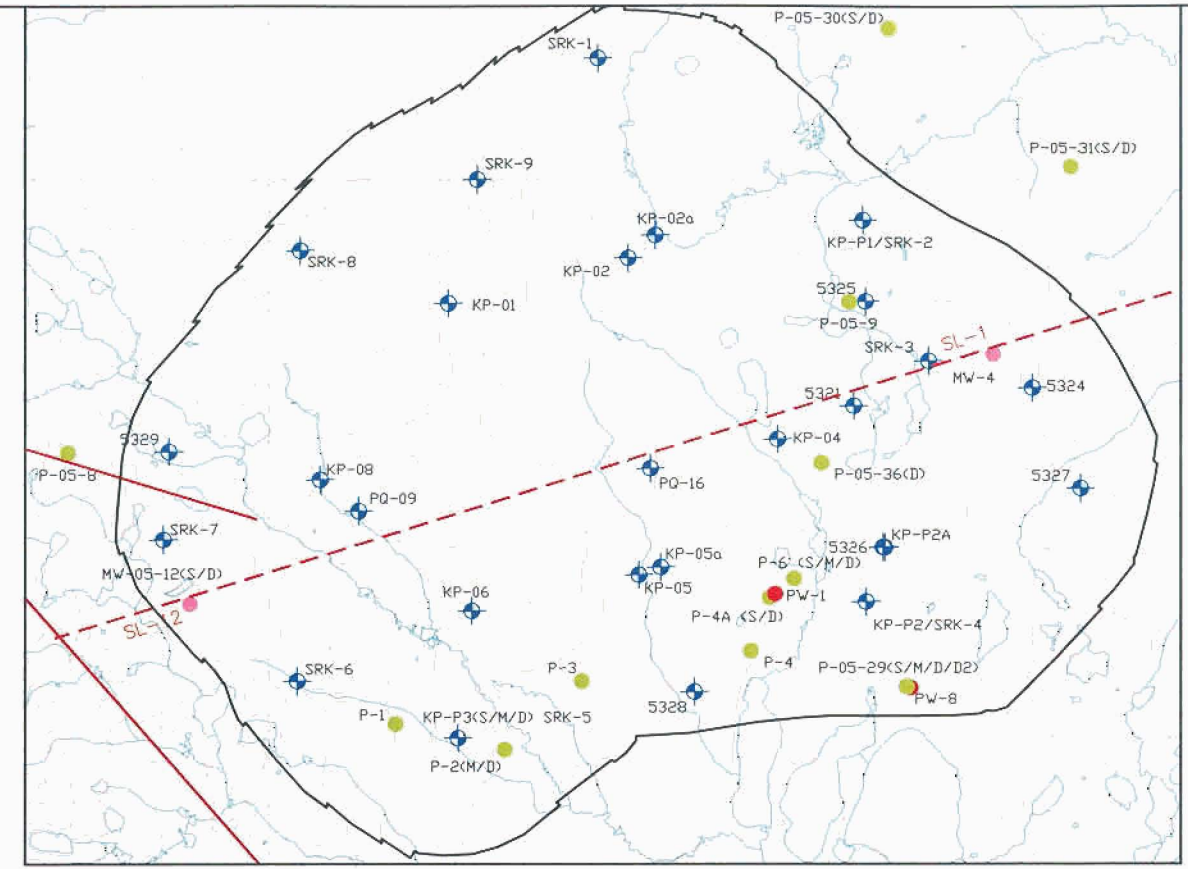
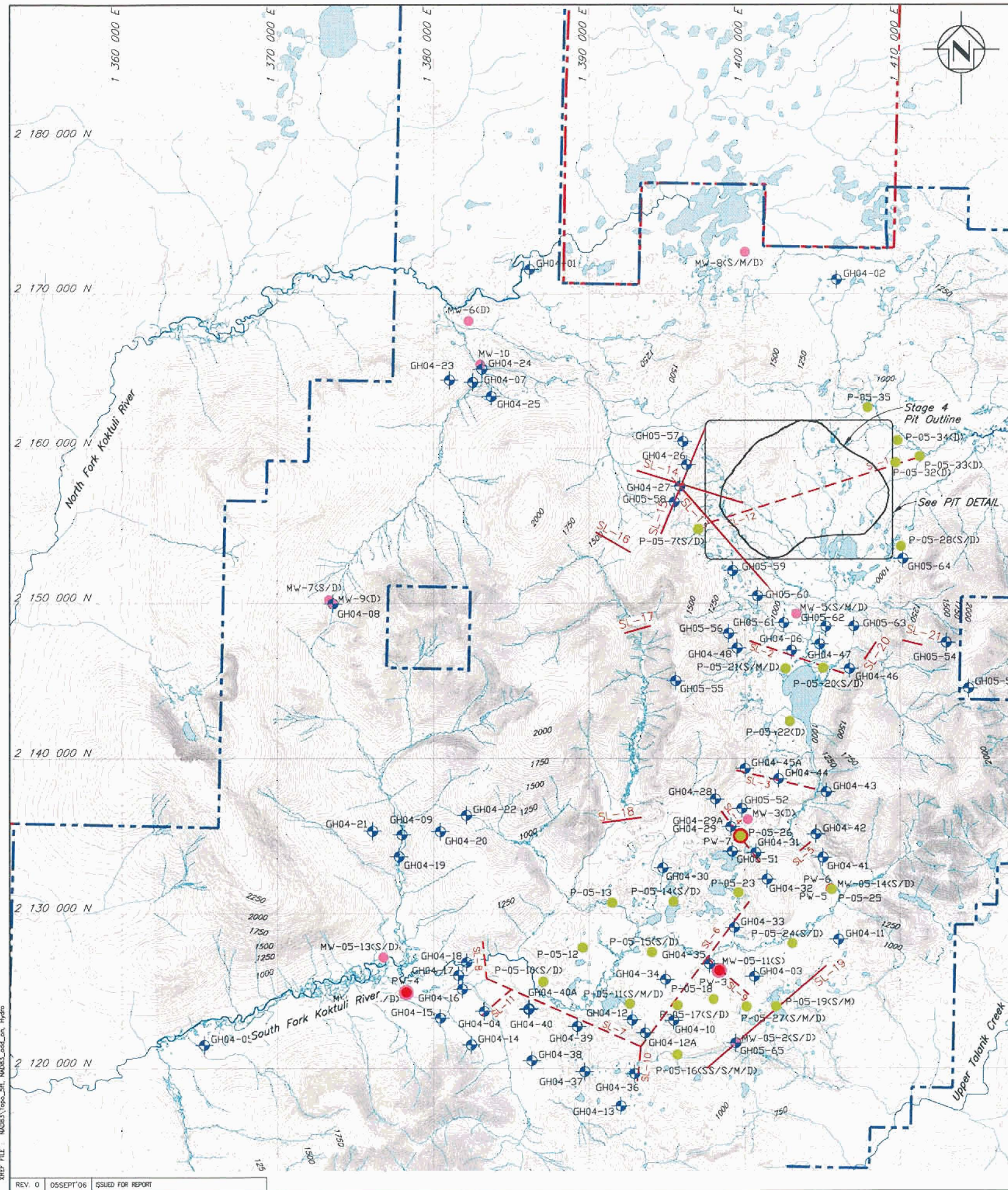
PROJECT/ASSIGNMENT NO. VA101-176/16	REF. NO. 12	REV. 0
--	----------------	-----------

FIGURE 3.2

KREF FILE: NAD03\Tops_Sk_Hydro_NAD03_001.dwg

REV. 0 05SEP2006 ISSUED FOR REPORT

CAD FILE: M:\1\01\00176\16\A\Acad\Figs\B107.dwg 1=7500 Plot: 1=1[PS] AUG 29, 2 06 SC



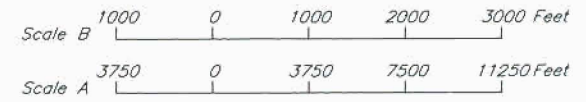
PIT DETAIL
Scale B

LEGEND

- Current NDM Mineral Claim Boundary
- Other Claim Boundary
- ◆ GH04-1 Geotechnical Drillholes Completed in 2004
- GH05-51 Geotechnical Drillholes Completed in 2005
- P-1 Completed Supplementary MW or Regional Piezometer
- PV-1 Completed Pumping Test Location
- MW-1 Completed Baseline Monitoring Wells
- 2004 Seismic Line
- 2005 Seismic Line

NOTES

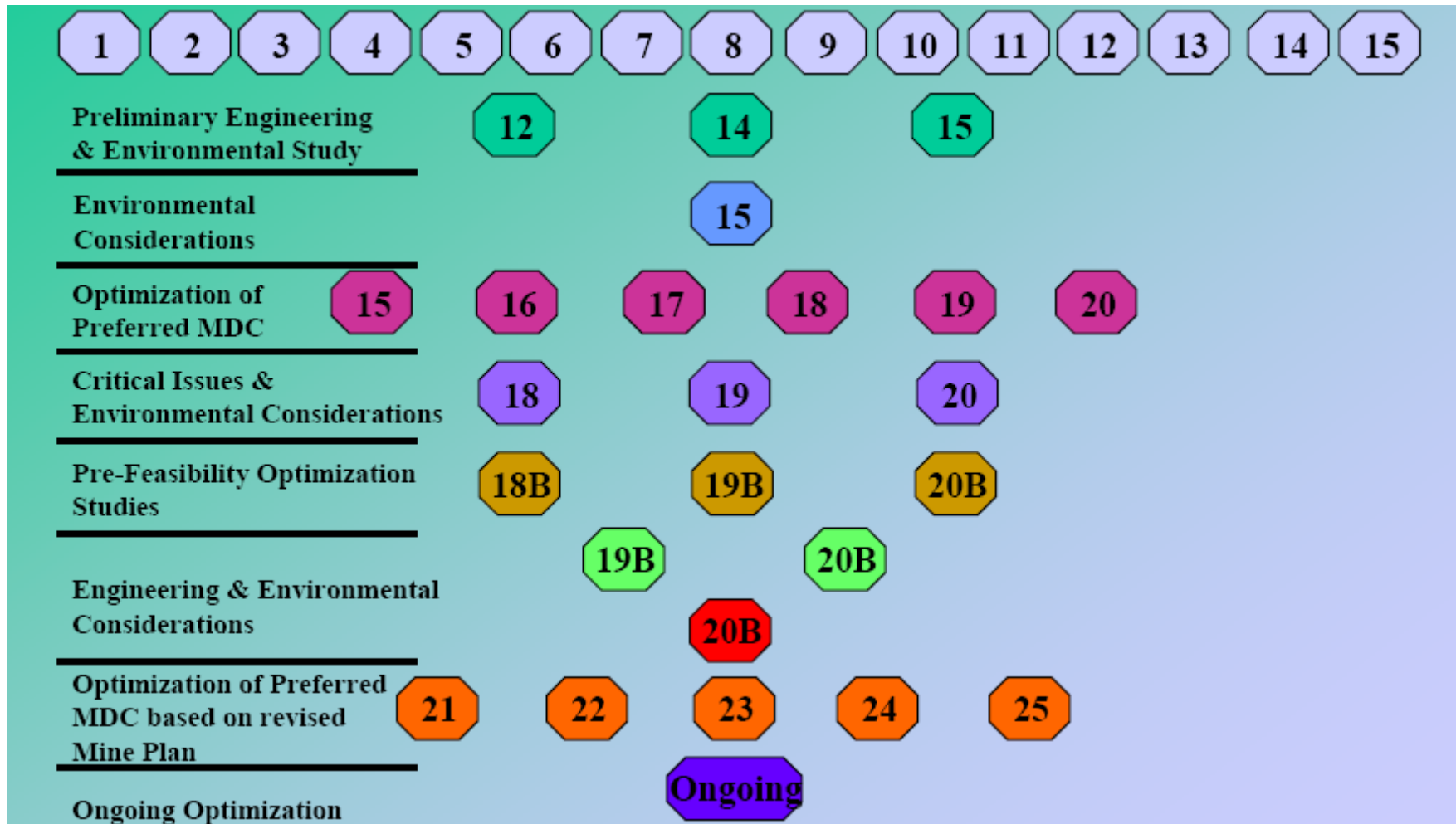
1. Piezometers installed in all Geotechnical Drillholes excluding oriented core holes.
2. As of Nov 8, 2005.



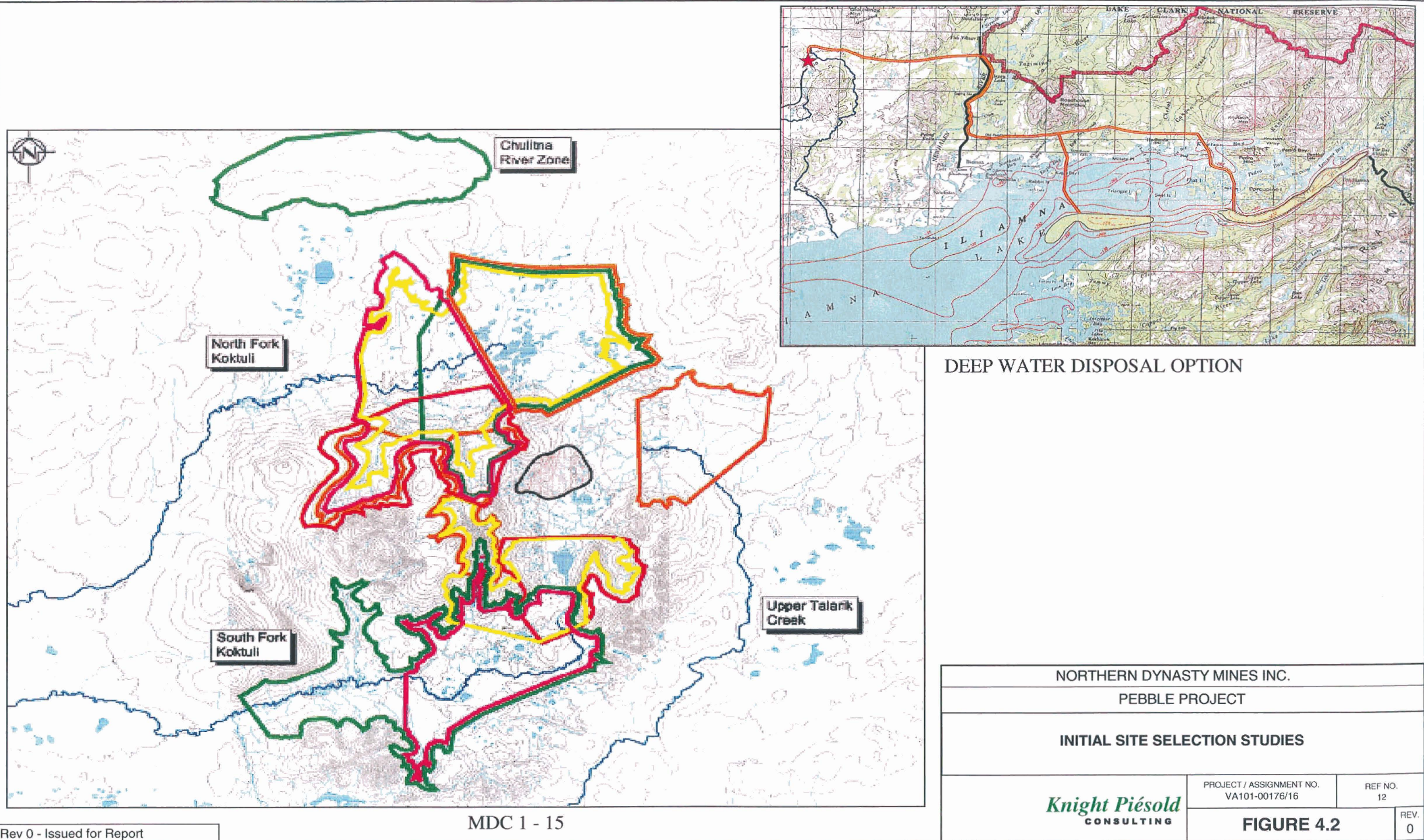
NORTHERN DYNASTY MINES INC.			
PEBBLE PROJECT			
GEOTECHNICAL DRILLHOLE LOCATION PLAN			
Knight Piésold CONSULTING		PROJECT/ASSIGNMENT NO. VA101-176/16	REF. NO. 12
		REV. 0	FIGURE 3.3

XREF FILE: M:\031\Topo_5ft_ND03_add_Lm_Hydro

CAD FILE: M:\1\01\00176\16\VA\Acad\Figs\B114.dwg 1=7500 & 1=2000 Plot: 1=1(FS) Aug 29, 2006 SC

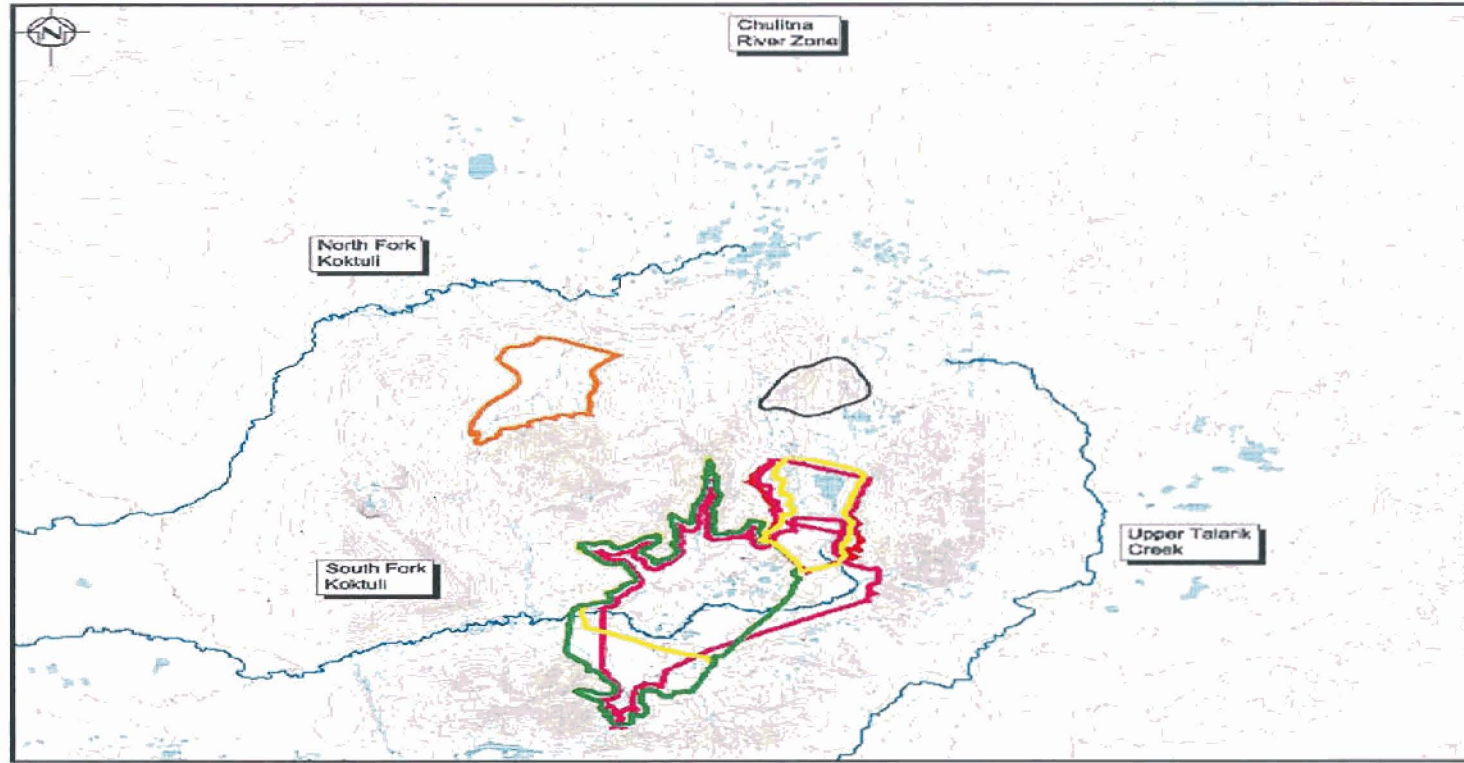


NORTHERN DYNASTY MINES INC.		
PEBBLE PROJECT		
OVERVIEW OF SITE SELECTION PROCESS		
<i>Knight Piésold</i> CONSULTING	PROJECT / ASSIGNMENT NO. VA101-00176/16	REF NO. 12
	FIGURE 4.1	
		REV. 0

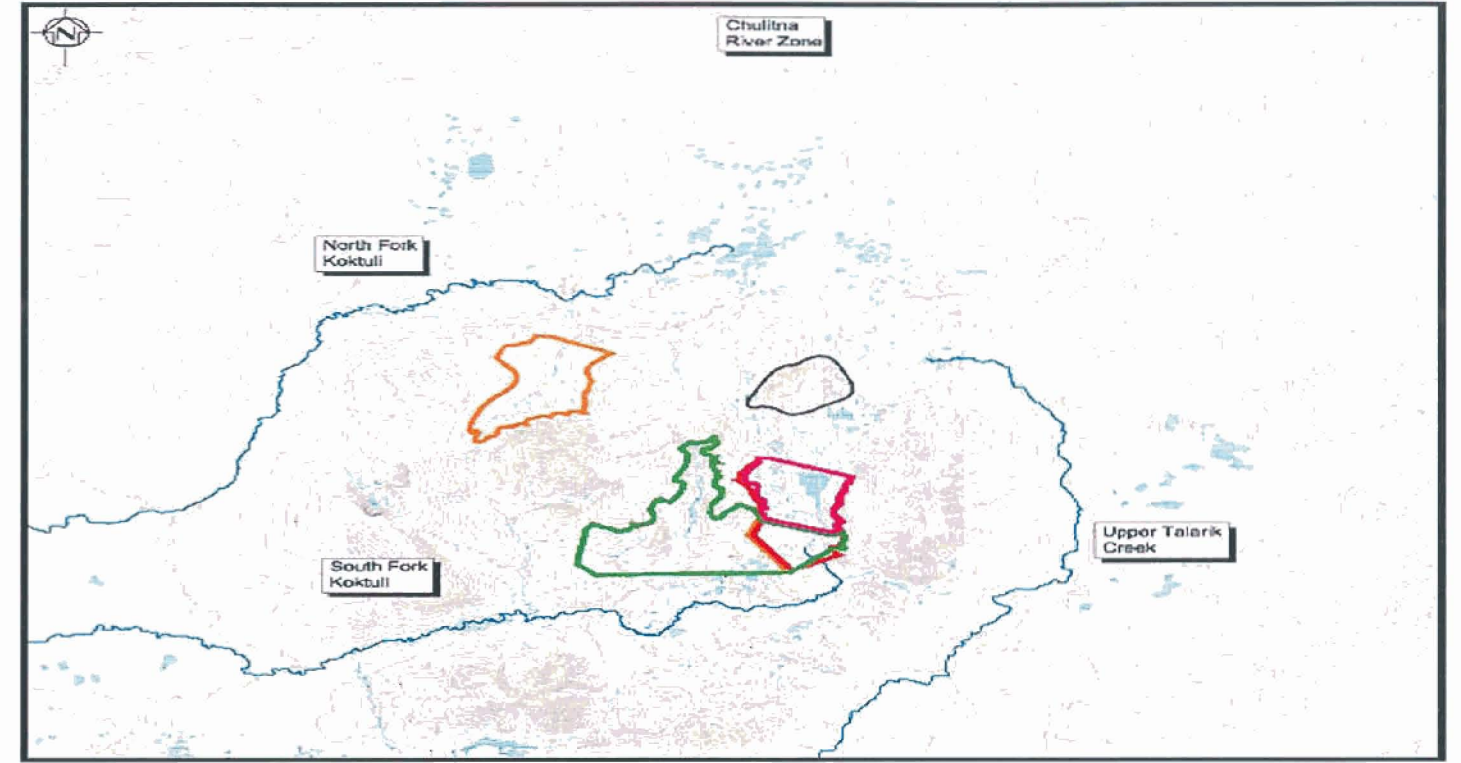


DEEP WATER DISPOSAL OPTION

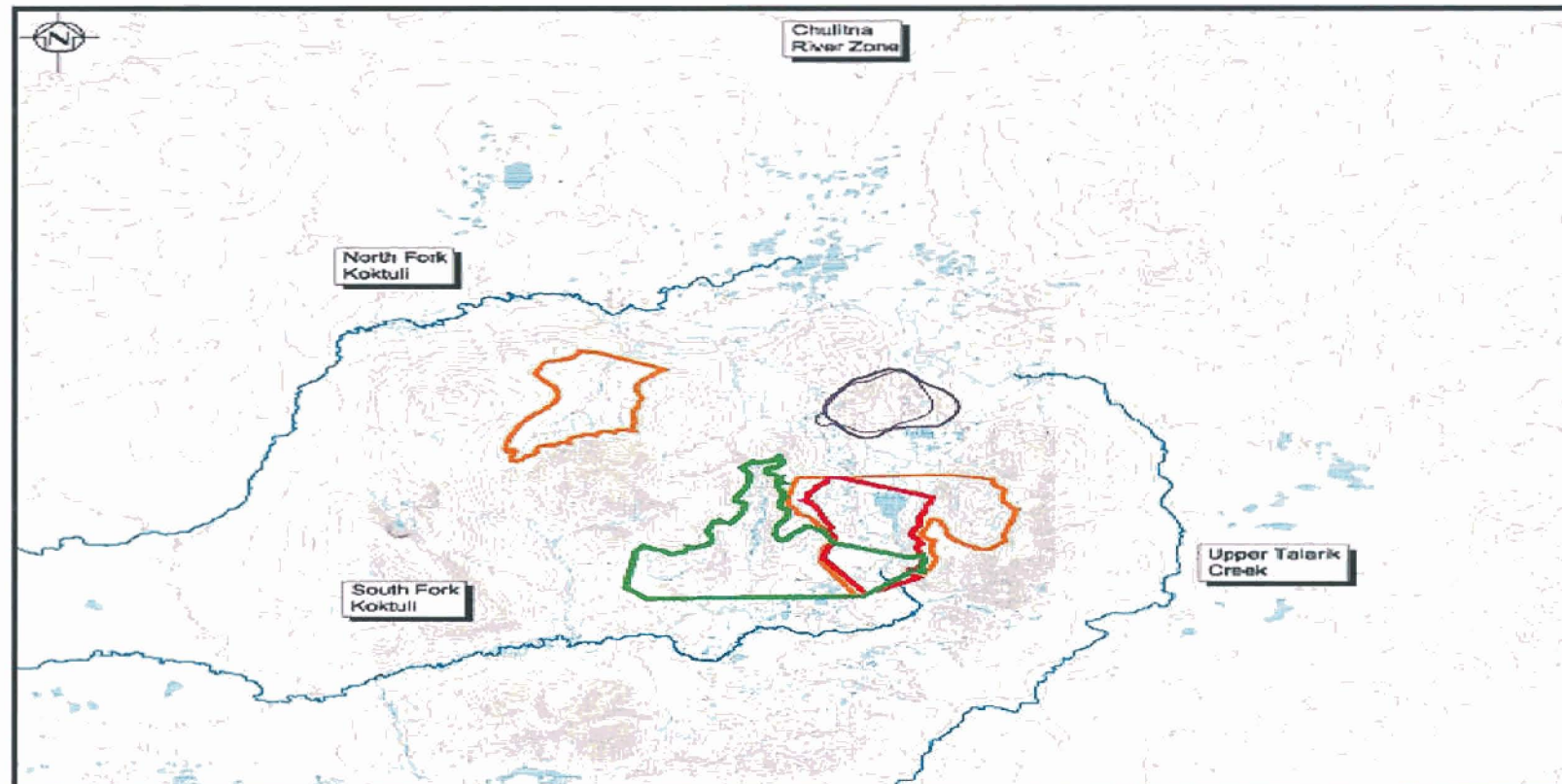
NORTHERN DYNASTY MINES INC.		
PEBBLE PROJECT		
INITIAL SITE SELECTION STUDIES		
	PROJECT / ASSIGNMENT NO. VA101-00176/16	REF NO. 12
	<p align="center">FIGURE 4.2</p>	
Rev 0 - Issued for Report		REV. 0



MDC 16 - 20

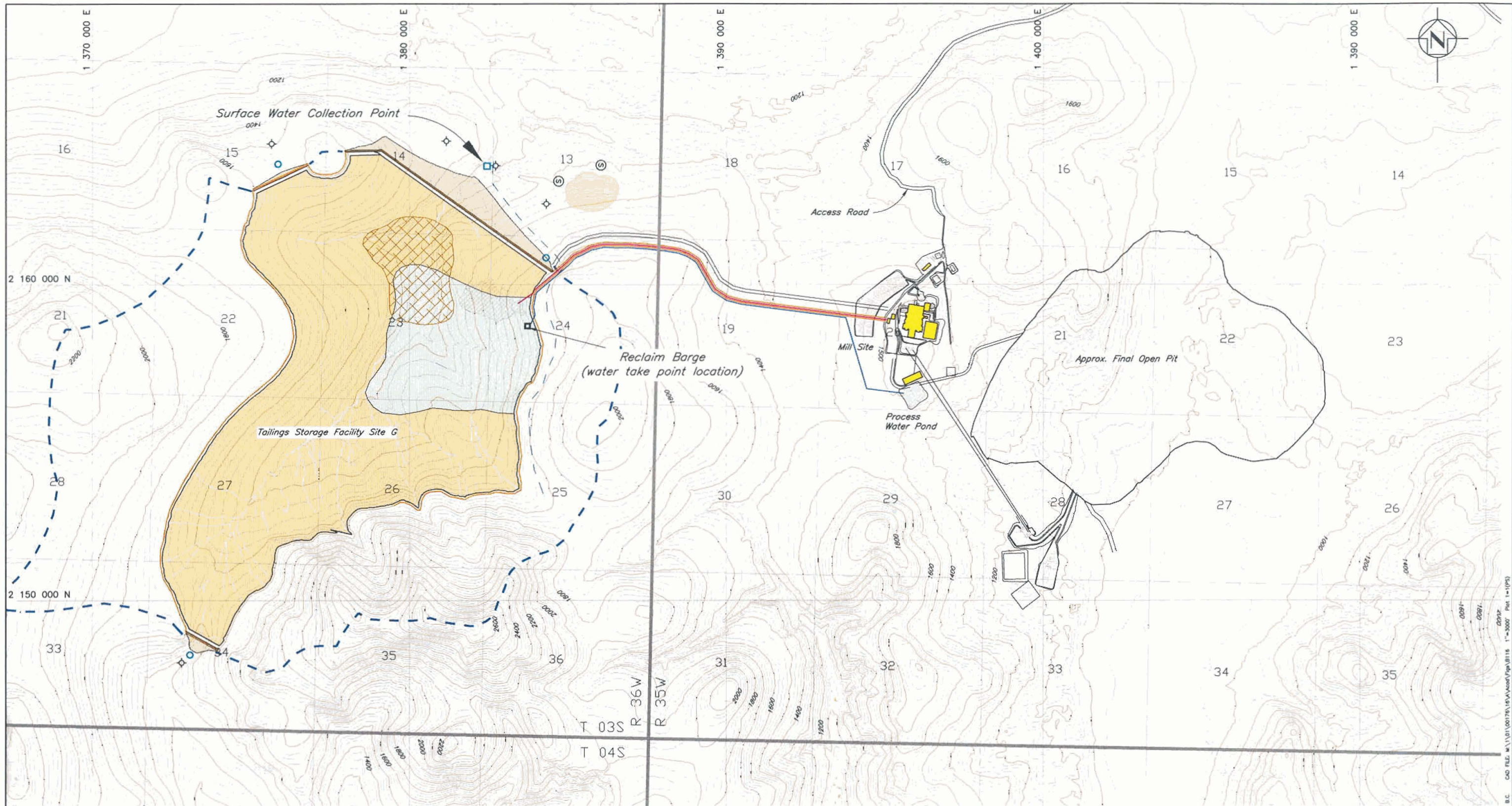


MDC 18B, 19B and 20B



MDC 21 - 25

NORTHERN DYNASTY MINES INC.		
PEBBLE PROJECT		
SUBSEQUENT AND ONGOING SITE SELECTION STUDIES		
	PROJECT / ASSIGNMENT NO. VA101-00176/16	REF NO. 12
	FIGURE 4.3	
		REV. 0



LEGEND

- | | | | | | |
|--|---------------------------------|--|----------------------------------|--|---------------------------------|
| | Tailings Beach | | TSF Catchment Boundary | | Monitoring Well |
| | Supernatant Pond | | Pyritic Tailings Slurry Pipeline | | Sediment Control |
| | Non-reactive Mine Rock | | Bulk Tailings Slurry Pipeline | | Seepage Collection Sump |
| | Potentially Reactive Waste Rock | | Reclaim Pipeline | | Surface Runoff Collection Point |
| | Pyritic Tailings | | Roads | | Topsail Stockpile |
| | | | Diversion Ditch | | Reclaim Barge |

NOTE

- Mine site topography information is in NAD83 Alaska State Plane Zone 5 Foot. Outer stream/lake features have been incorporated from NAD27 information. Contour interval shown is 25 ft. Information provided by Eagle Mapping, Nov. 2004.
- The Pebble Project is located within Townships 3-5 South, Ranges 34-37 West, Seward Meridian.

DRAFT

FOR DISCUSSION ONLY

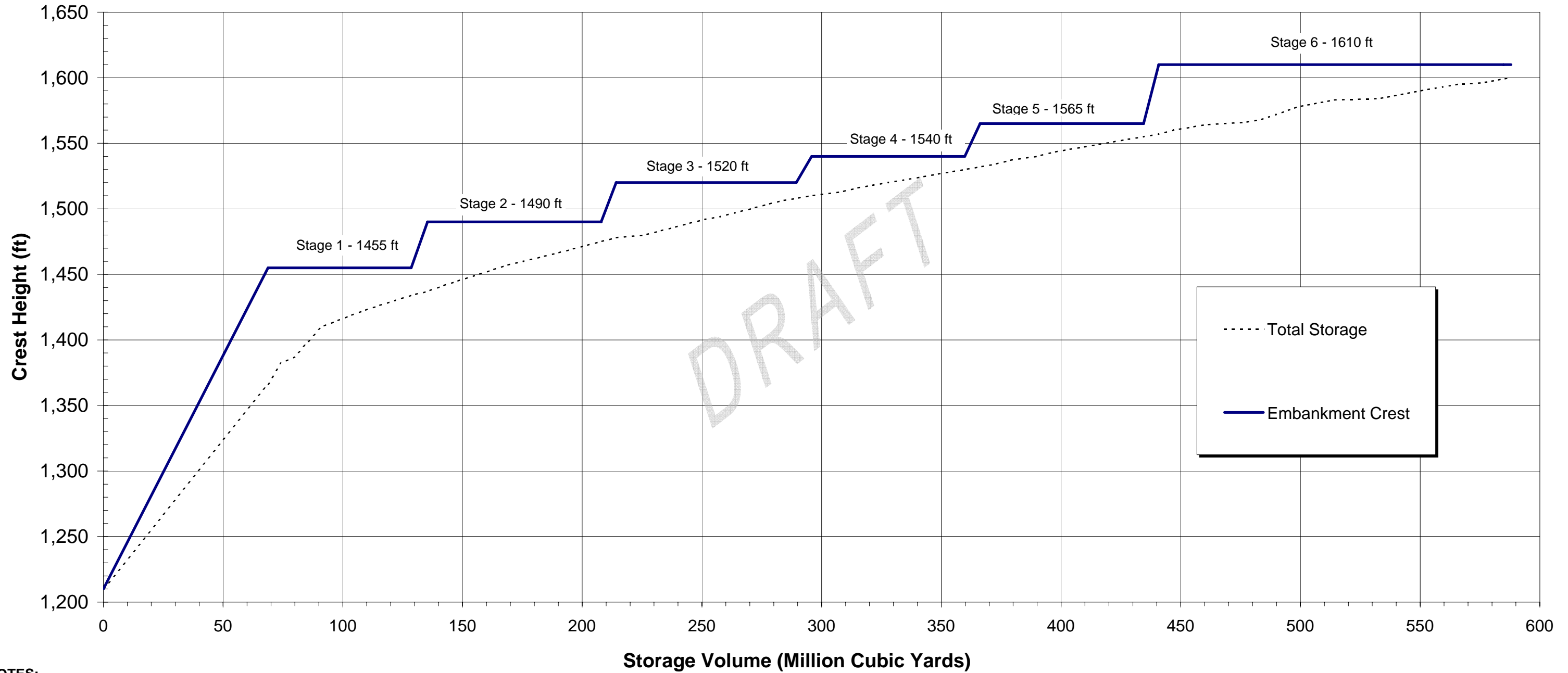


NORTHERN DYNASTY MINES INC.
 PEBBLE PROJECT
 TAILINGS STORAGE FACILITY -- SITE G
 GENERAL ARRANGEMENT

	PROJECT/ASSIGNMENT NO. VA101-176/16	REF. NO. 12
	FIGURE 5.1	

XREF FILE : Topo_S11_Hydro_Features

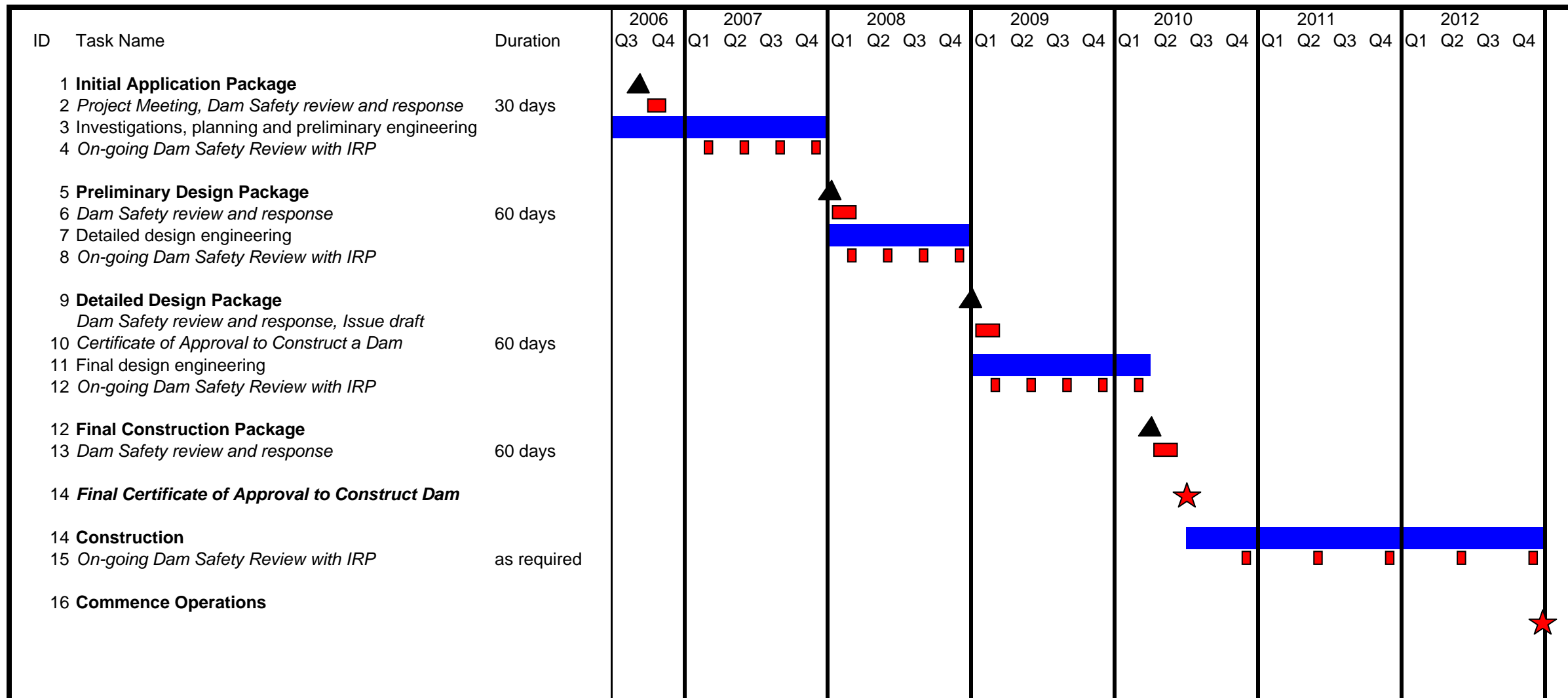
W:\WORKSPACE\B.C. CAD FILE: M:\1\101\00176\16\VA101\Fig5.1.dwg 1"=3000' Plot 1=1(P) 05/27/06




NOTES:

- 1) Total Storage Volume Includes Tailings, Supernatant Pond and Storm Containment
- 2) Embankment Crest Elevation Includes 10 ft. freeboard

NORTHERN DYNASTY MNES INC.		
PEBBLE PROJECT		
TAILINGS STORAGE FACILITY SITE G FILLING SCHEDULE		
<i>Knight Piésold</i> CONSULTING	PROJECT / ASSIGNMENT NO. VA101-176/16	REF NO. 12
	FIGURE 5.3	
		REV. 0



NORTHERN DYNASTY MINES INC		
PEBBLE PROJECT		
TAILINGS IMPOUNDMENT G - INITIAL APPLICATION REPORT DAM SAFETY APPLICATION AND REVIEW PROCESS		
	PROJECT / ASSIGNMENT NO. VA101-176/16	REF NO. 12
	FIGURE 5.4	
		REV. 0

Rev 0 - Issued for Report